

TOUR ITINERARY 3D/2N (2 NIGHTS IN THE TOWN & 1 DAY TRIP TO KOMODO NP)

CODE: STDT3DMB1 PILGRIME
VALID: UNTIL MARCH 31st, 2026





About This Tour



Labuan Bajo is a fishing town located at the western end of the large island of Flores in the East Nusa Tenggara province of Indonesia.

It is the capital of the West Manggarai Regency, one of the regencies on Flores Island.

The town is one of the gateways into the charm of Flores; you can reach it by direct flight from Malaysia, Jakarta, Surabaya, or Bali, or you can do it by ferry boat.

Why should you come to Labuan Bajo? Because there are some good destinations to visit, such as Mirror Cave Stone, Puncak Waringin Hill, Amelia Sea View, Ranko Cave, several waterfalls, and Komodo National Park.

Komodo National Park is located in the center of the Indonesian archipelago, between the islands of Sumbawa and Flores. It's composed of some major islands (Komodo Island, Rinca Island, Padar Island, Gili Motang, and Nusakode), and there are some smaller islands.



About This Tour

Exploring the Komodo national park you will have a good underwater experience with a thousand kinds of fishes such as Manta rays, turtle, shark and the others, still have a chance to relax at some beauty pink beach with crystal sea water. Take a moment to appreciate the panoramic views of turquoise sea, dry or green rolling hill, blue sky and the colors of the beach. Komodo island is inhabited by a population of the flora and fauna especially komodo dragon. This 3 days and 2 nights sailing trip is the best choice for the Traveler to enjoy at the town and stay overnight on the wooden boat, then explore the whole beautiful park.

Nusa Tenggara Timur
eastern lesser sunda islands





ITINERARY DETAILS





ITINERARY

DAY 1: PICK UP FROM KOMODO AIRPORT OF LABUAN BAJO – GUA MARIA GOLO KOE - WARINGIN HILL – AMELIA SEA VIEW

Activities

- Arrival recommended flight (06.30-12.00 AM)
- Komodo Airport – Gua Maria Golo Koe (30 minutes)
- Gua Maria Golo Koe –Waringin Hill (30 minutes)
- Waringin Hill – Amelia Sea View (25 minutes)

Transportation included : Private Car

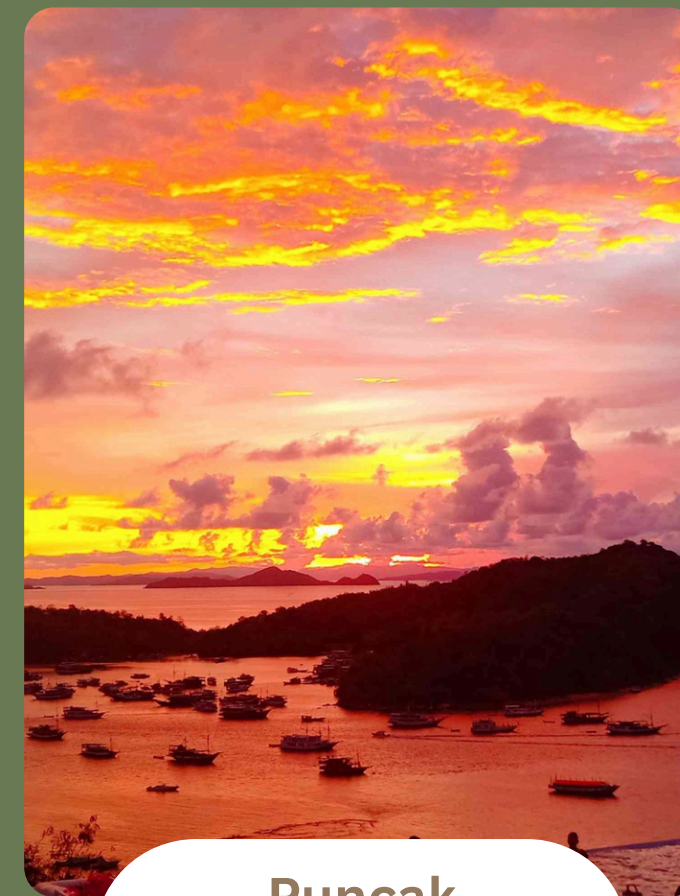
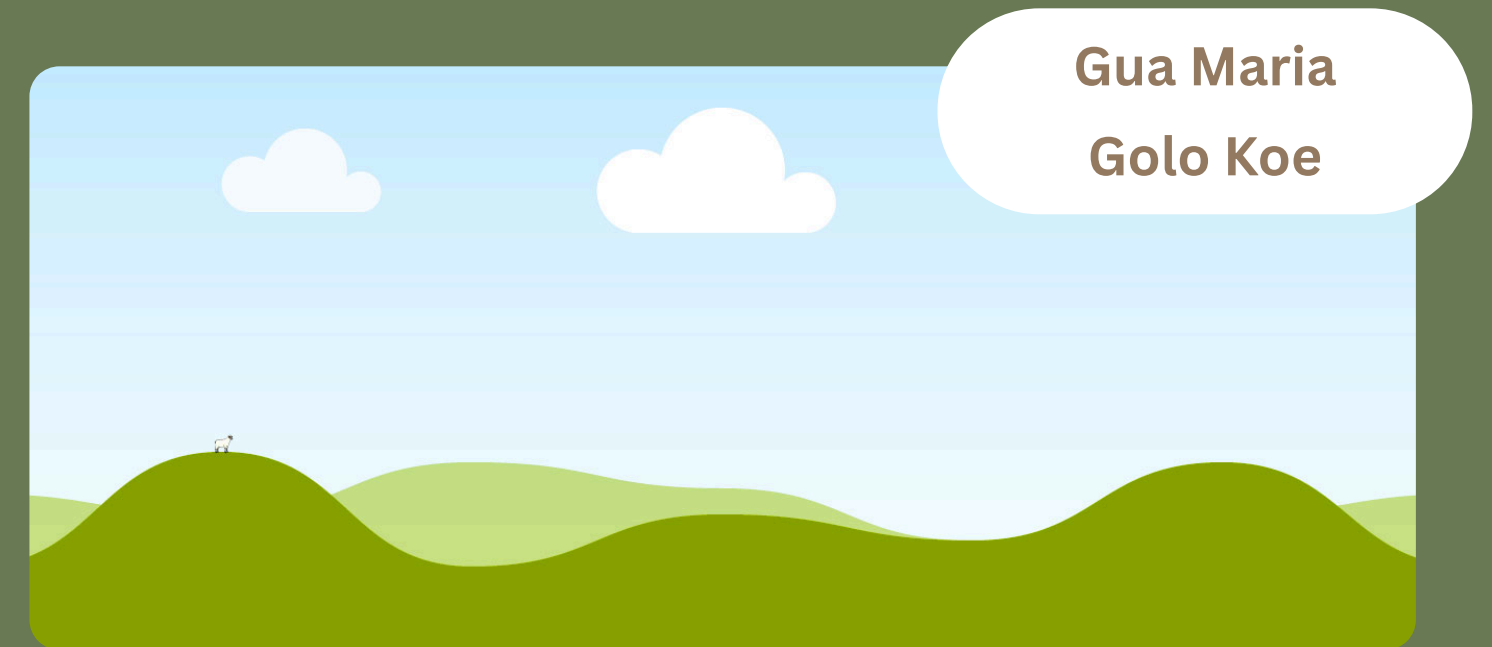
Accommodation : Zasgo Hotel/ Silvya Beach Hotel & Resort/ La Prima Hotel/ The Jayakarta Suite Komodo Flores/ Bintang Flores Hotel/ Loccal Collection Hotel

Meals included : Lunch | Dinner

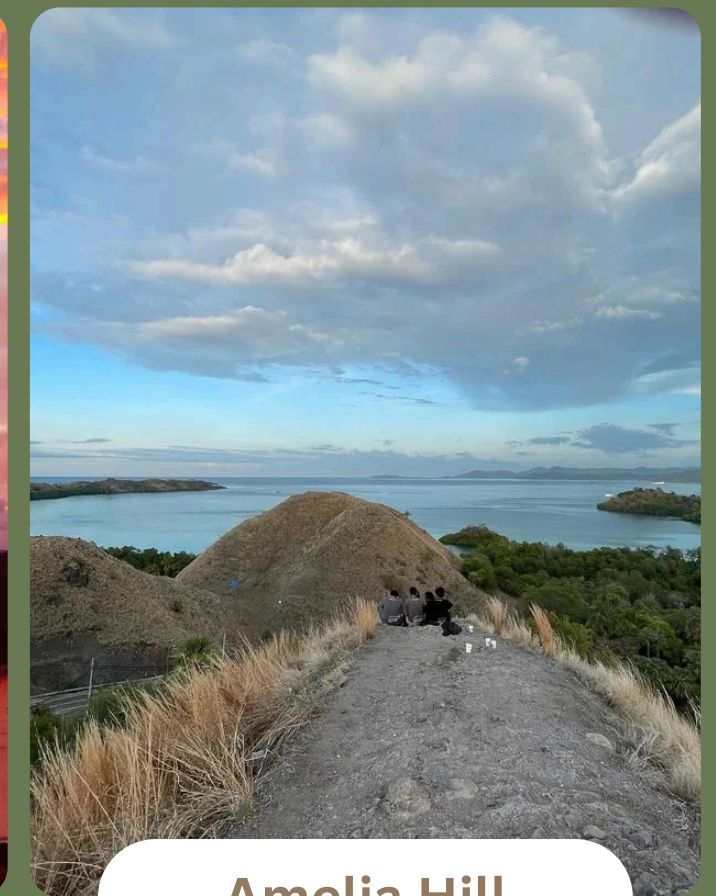


Day 1 - Itinerary Details

- ✦ A guide will pick you up at the hotel and welcome you with traditional weaving.
- ✦ You start at “Gua Batu Golo Koe”. We will come to one of popular “Taman Doa” for Catholic People in Labuan Bajo.
- ✦ Then you will go to Waringin Hill. It is about 50 meters above sea level and one of the best spots to enjoy the sunset in the town. From here, you can also see the beauty of Labuan Bajo town.
- ✦ Continuing to Amelia Sea View, its hills offer a breathtaking combination of sea and mountains. From the top of the hill, you can enjoy both sunrise and sunset, as it provides a 360° panorama of Labuan Bajo and surrounding waters.



Puncak
Waringin



Amelia Hill



ITINERARY

DAY 2: LABUAN BAJO – PADAR ISLAND (SUNRISE TREKKING) – PINK BEACH (SNORKELING)) – KOMODO ISLAND (TREKKING TO SEE KOMODO DRAGON) – MAKASSAR REEF (SNORKELING) – MANTA POINT (SEE MANTA) – VISIT & PRAY IN CATHEDRAL OF LABUAN BAJO

Activities

- Picking you up at the hotel (5.45 – 6.15 am)
- Labuan Bajo – Padar Island (1.30 minutes)
- Padar Island – Pink Beach (40 minutes)
- Pink Beach – Komodo Island (40 minutes)
- Komodo Island – Makassar Reef (40 minutes)
- Makassar Reef – Manta Point (10 minutes)
- Departure at 5.00 pm

Transportation included : Private Car | Private Speedboat

Accommodation : Zasgo Hotel/ Silvy Beach Hotel & Resort/ La Prima Hotel/ The Jayakarta Suite Komodo Flores/ Bintang Flores Hotel/ Loccal Collection Hotel

Meals included : Breakfast | Lunch Box | Dinner



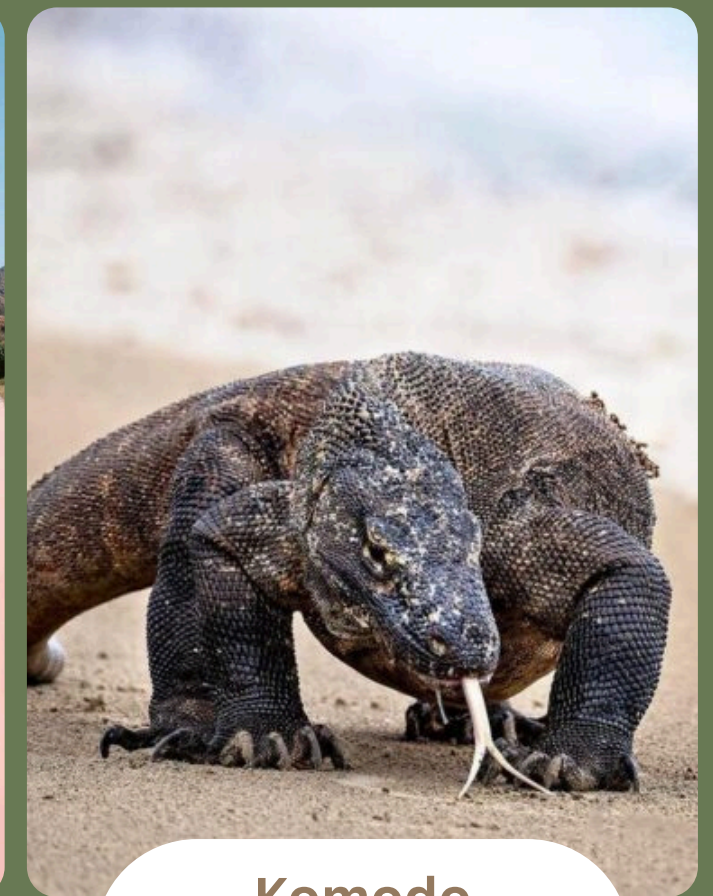
Day 2 - Itinerary Details

- ✦ A guide/driver will pick you up at the hotel between 5.45 and 6.15 am.
- ✦ You start to sail to Padar Island to enjoy the panorama from the top, which means you're going to do trekking to enjoy the stunning three different bay views. The view of the blue sea and the surrounding small islands are just mesmerizing. Then you sail to one of the pink beaches (Long Pink Beach Padar or Pink Beach Komodo). This exceptional beach gets its striking color from microscopic animals called foraminifera, which produce a red pigment on the coral reef. You will relax and have fun swimming around this beach.
- ✦ Komodo Island is the home of the unique and rare biggest lizard on earth, called the Komodo dragon. The ways to explore the flora and fauna there are three different treks: short trek, medium trek, and long trek (regular trek), and you could also do an adventure trek (optional). On the island, you will explore and trek to find them out.

Padar Island



Pink Beach

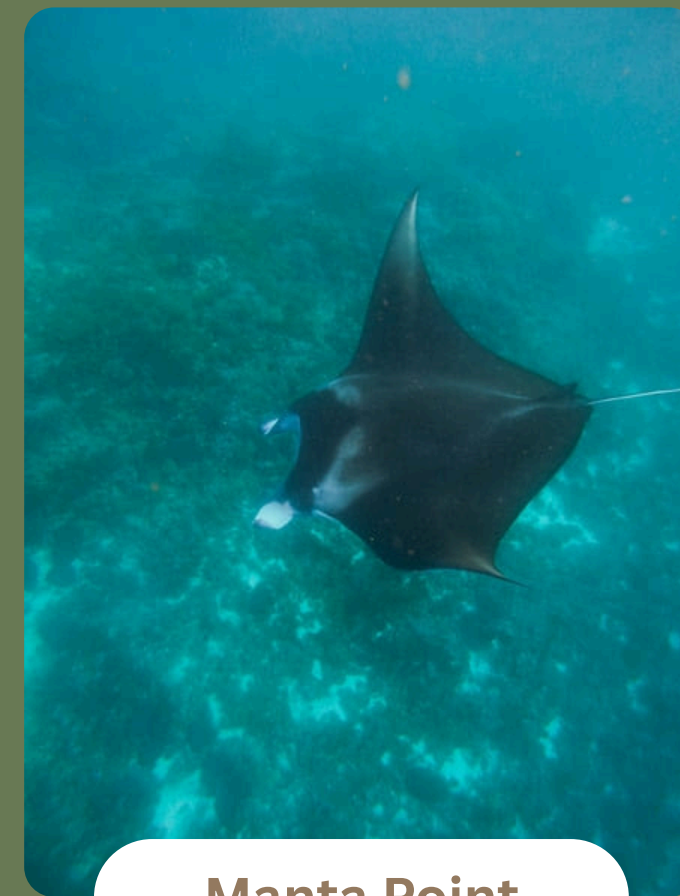
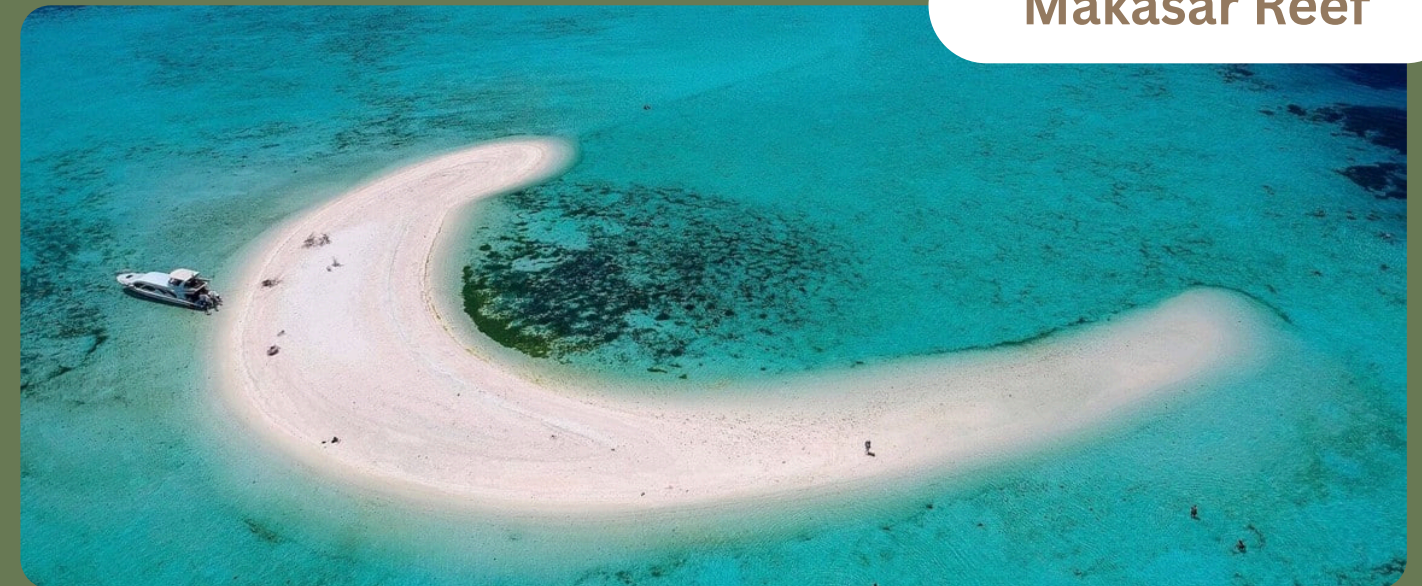


Komodo Island

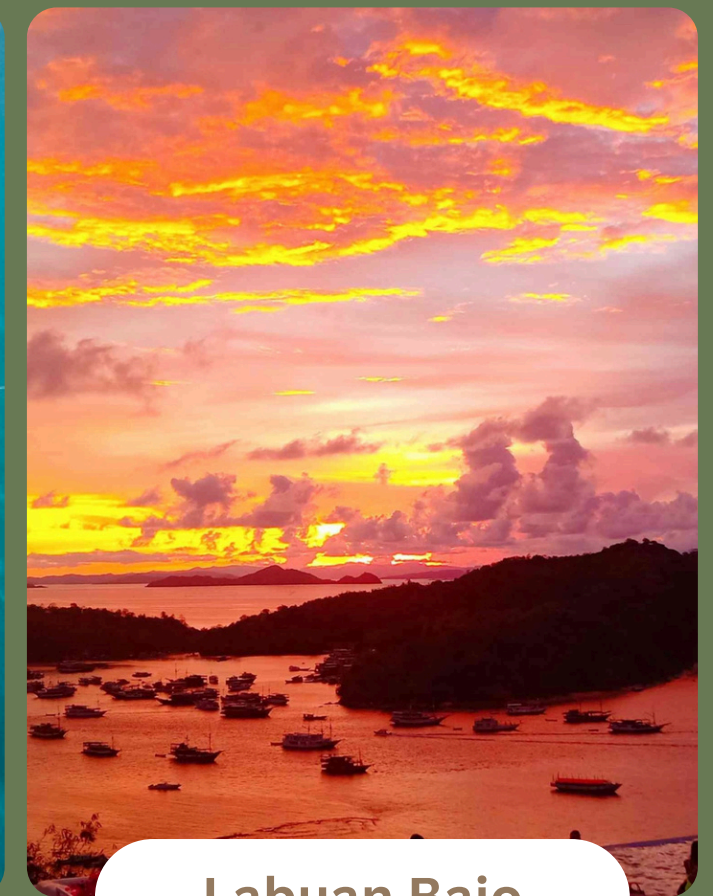
Day 2 - Itinerary Details

- ✦ Then you continue to Makasar Reef. It's a tiny sand island in the middle of the ocean, which will submerge underwater when the sea level rises over it. It's a good place for relaxing and snorkeling in shallow water. This sand island is located very close to Manta Point. If you are lucky, you will be snorkeling with manta rays (they are 3–4 meters long). After that, you sail back to Labuan Bajo.
- ✦ Then we will visit & pray in Cathedral of Labuan Bajo before dinner & take a rest after full day activities

Makasar Reef



Manta Point



Labuan Bajo



ITINERARY

**DAY 3: LABUAN BAJO TOWN – IKAT WEAVING STUDIO – MELO VILLAGE
– SOUVENIR SHOP/GALLERY – TRANSFER TO KOMODO AIRPORT**

Activities

- We recommended to take flight around (12.00 AM – 18.00 PM)
- Hotel - Melo Village (1 Hour 30 minutes)
- Melo Village – Rumah Tenun Baku Peduli (40 minutes)
- Rumah Tenun Baku Peduli – Exotic Komodo | Kado Bajo (30 minutes)
- Komodo Airport

Transportation included : Private Car

Meals included : Breakfast | Lunch



Day 3 - Itinerary Details

- ✦ Breakfast at 6.00 to 8.00 am.
- ✦ You start at Melo village; it is one of the original areas that holds its charm. A typical village dance will be presented, namely the caci dance. This dance is a typical Manggarai dance, and the people who play it are native men from this village. The dance also has a philosophical value, namely as a form of gratitude to God as the Creator of the universe.
- ✦ Then, you will go to Rumah Tenun Baku Peduli. This place showcased various tenun from around Flores. When you are arriving, they immediately demonstrated how the tenun was woven and patiently explained the process.
- ✦ And then you go to the gallery shop to look for something that you like from here, such as traditional weaving, a Komodo statue, local coffee, traditional arrack, etc.
- ✦ After that, the guide takes you to the Komodo Airport.

Melo Village



Rumah Tenun



Souvenir Shop



Additional

WHAT'S INCLUDED?

- PICK UP FROM AIRPORT & TRANSFER TO AIRPORT
- PROFESSIONAL TOUR GUIDE
- ENTRANCE FEE, RANGER FEE
- PRIVATE CAR AC WITH EXPERIENCE DRIVER IN LABUAN BAJO
- PRIVATE SPEEDBOAT FOR DAILY TRIP TO KNP
- BREAKFAST, LUNCH & DINNER AS ITINERARY
- HOTEL ROOM (1 ROOM FOR 2 PAX)
- SNORKELING GEAR
- SMALL IKAT WEAVING (FOR WELCOMING)
- INSURANCE
- MINERAL WATER
- TAX & SERVICES

WHAT'S EXCLUDED?

- FLIGHT TICKET & AIRPORT TAX
- DONATION/TIP
- ALCOHOL
- DIVING PACKAGE
- LAUNDRY, TELEPHONE
- OTHERS SPECIAL REQUEST

Noted: The price listed next are curated based on the hotels below

NAME HOTEL/RESORT	ROOM TYPE
ZASGO HOTEL	City Simplify
SYLVIA BEACH HOTEL & RESORT	Deluxe
LA PRIMA HOTEL	Premier
THE JAYAKARTA SUITE KOMODO FLORES	Deluxe
BINTANG FLORES HOTEL	Deluxe
LOCCAL COLLECTION HOTEL	Standard

Price per Pax



Price in Indonesian Rupiah (IDR)

RATE PER PAX:

- 1 PAX = IDR 22,522,500.00
- 2 PAX = IDR 11,962,500.00
- 3 PAX = IDR 8,985,166.67
- 4 PAX = IDR 8,299,500.00
- 5 PAX = IDR 7,181,900.00
- 6 PAX = IDR 6,812,666.67
- 7 PAX = IDR 6,652,642.86
- 8 PAX = IDR 6,199,875.00
- 9 PAX = IDR 5,847,722.22
- 10 PAX = IDR 5,734,300.00

RATE PER PAX:

- 11 PAX = IDR 6,062,500.00
- 12 PAX = IDR 5,903,333.33
- 13 PAX = IDR 5,854,961.54
- 14 PAX = IDR 5,653,214.29
- 15 PAX = IDR 5,478,366.67
- 16 PAX = IDR 5,439,500.00
- 17 PAX = IDR 5,429,794.12
- 18 PAX = IDR 5,296,500.00
- 19 PAX = IDR 5,177,236.84
- 20 PAX = IDR 5,069,900.00

RATE PER PAX:

- 21 PAX = IDR 5,460,452.38
- 22 PAX = IDR 5,350,000.00
- 23 PAX = IDR 5,249,152.17
- 24 PAX = IDR 5,156,708.33
- 25 PAX = IDR 5,071,660.00
- 26 PAX = IDR 5,197,161.54
- 27 PAX = IDR 5,116,914.81
- 28 PAX = IDR 5,042,400.00
- 29 PAX = IDR 4,973,024.14
- 30 PAX = IDR 4,952,640.00

RATE PER PAX:

- 31 PAX = IDR 5,546,661.29
- 32 PAX = IDR 5,461,843.75
- 33 PAX = IDR 5,388,166.67
- 34 PAX = IDR 5,324,647.06
- 35 PAX = IDR 5,282,042.86
- 36 PAX = IDR 5,347,222.22
- 37 PAX = IDR 5,314,932.43
- 38 PAX = IDR 5,284,342.11
- 39 PAX = IDR 5,255,320.51
- 40 PAX = IDR 5,227,750.00

RATE PER PAX:

- 41 PAX = IDR 5,386,941.46
- 42 PAX = IDR 5,326,121.43
- 43 PAX = IDR 5,272,734.88
- 44 PAX = IDR 5,226,275.00
- 45 PAX = IDR 5,170,391.11
- 46 PAX = IDR 5,211,510.65
- 47 PAX = IDR 5,176,922.98
- 48 PAX = IDR 5,143,776.46
- 49 PAX = IDR 5,111,982.86
- 50 PAX = IDR 5,081,461.00

RATE PER PAX:

- 51 PAX = IDR 5,390,754.90
- 52 PAX = IDR 5,341,557.69
- 53 PAX = IDR 5,297,952.83
- 54 PAX = IDR 5,259,629.63
- 55 PAX = IDR 5,213,300.00
- 56 PAX = IDR 5,236,392.86
- 57 PAX = IDR 5,197,692.98
- 58 PAX = IDR 5,160,327.59
- 59 PAX = IDR 5,124,228.81
- 60 PAX = IDR 5,089,333.33

RATE PER PAX:

- 61 PAX = IDR 5,366,647.54
- 62 PAX = IDR 5,325,774.19
- 63 PAX = IDR 5,289,341.27
- 64 PAX = IDR 5,257,140.63
- 65 PAX = IDR 5,217,976.92
- 66 PAX = IDR 5,237,500.00
- 67 PAX = IDR 5,204,559.70
- 68 PAX = IDR 5,172,588.24
- 69 PAX = IDR 5,141,543.48
- 70 PAX = IDR 5,111,385.71