

wonderful indonesia



Flores Overland Trip

10D9N

Code: 10DFLOV

www.ntt-dmc.com





About This Tour



Flores is one of the Lesser Sunda Island, a group of islands in the eastern half Indonesia. Administratively, it forms the largest island in the East of Nusa Tenggara Province. **Flores island is the most fascinating and beautiful island.**

Long hidden in the shadows of its more famous neighbor of Bali and Lombok, take time to marvel at some of the **wonder of Flores.**

Here, there are some traditional village, you can swim in pristine lakes and waterfalls, snorkeling at one of the best sites, plenty of beach such as black white and pink beaches, go kayaking among craggy coasts and mangrove shores, hiking at the Volcano mounts, explore mysterious caves and be warmly welcomed by the island's people in their rituals, dances and daily life!



About This Tour



Flores is located **east of Sumbawa** and **Komodo Island**, where Komodo island is in East Nusa Tenggara Province.

The national park was found in 1980 to protect the Komodo dragon, the largest lizard in the earth, later it was dedicated to protection other species including marine species. In 1991 the national park was declared a UNESCO world Heritage Site, it is considered **one of the world's 25 biodiversity hotspots**.



Itinerary Details





Day 1 & 2

ARRIVING AT MAUMERE | EXPLORING ISLANDS NEARBY

Activities on DAY 1

- Recommended time of arrival: 12.00 - 15.00
- Direct transfer to hotel
- Free time | No activities

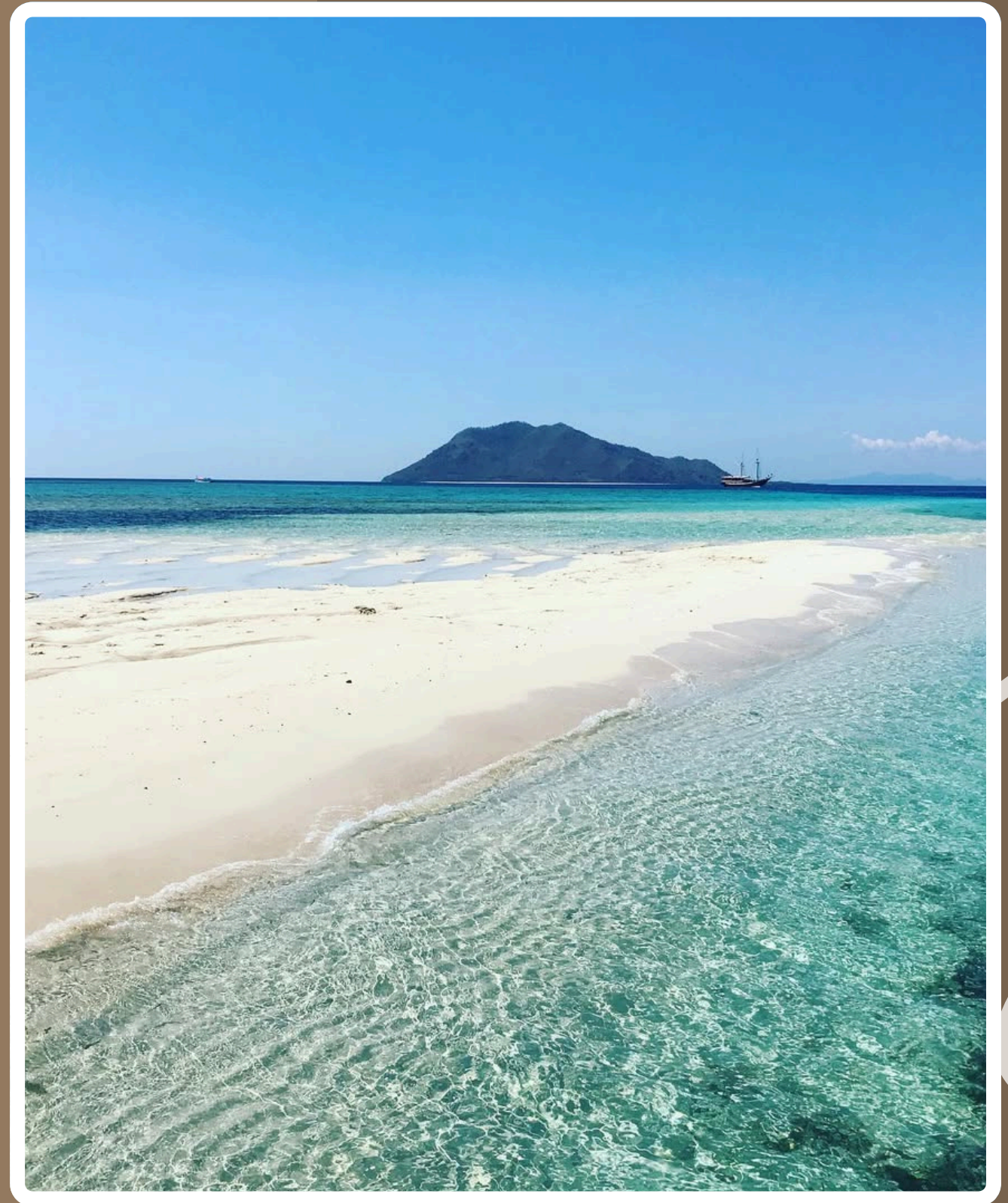
Activities on DAY 2

- Breakfast starts at 06.00 - 07.00
- Local hotel - Nanga Hale port (50 minutes)
- Nanga Hale port - Babi Island (90 minutes)
- Babi Island – Pangabatan Island (45 minutes)
- Pangabatan Island – Koja Doi Village (45 minutes)

Transportation included : Private Car Car and Local Wooden Boat/Open Deck

Accommodation : Coconut Beach Resort, Maumere/similar

Meals included : Lunch (Day 1), Breakfast | Lunch | - (Day 2)



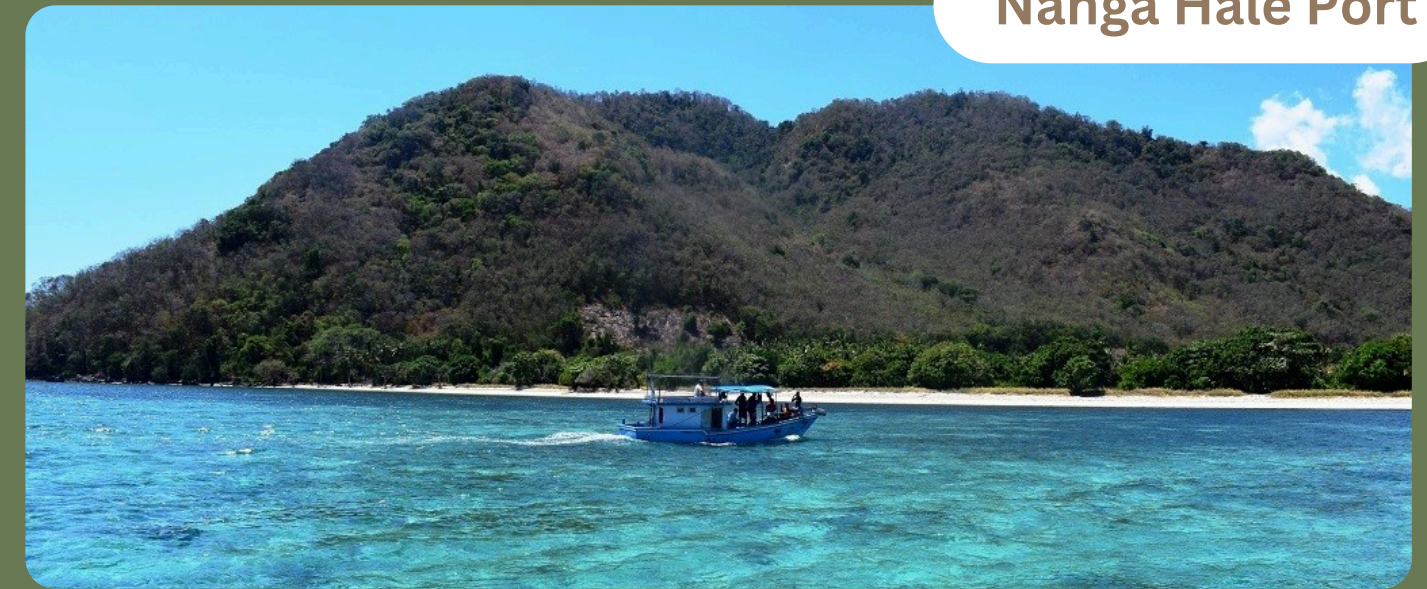


Day 1 & 2

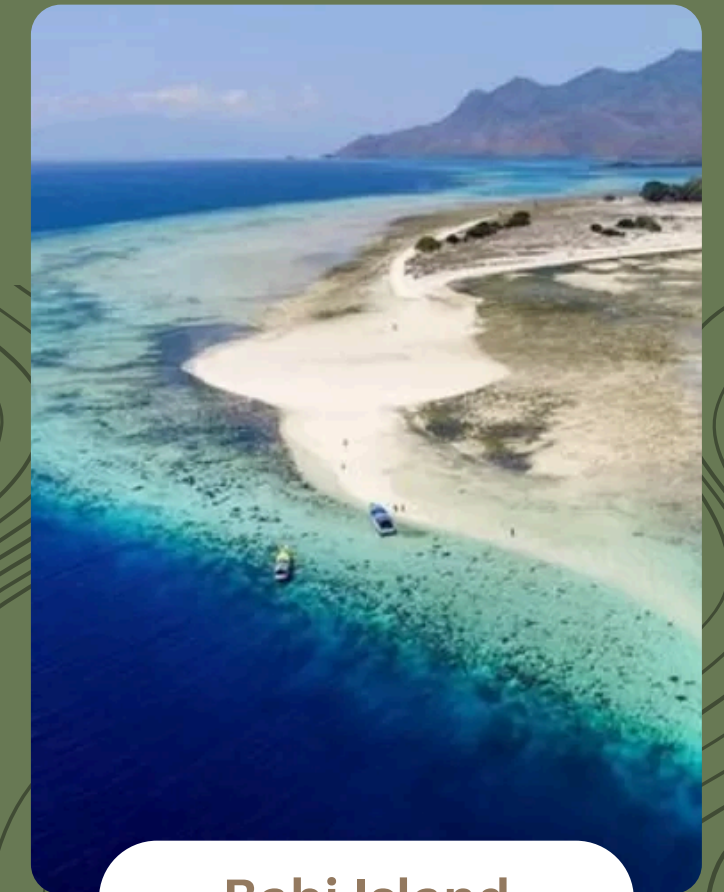
ITINERARY DETAILS

- ✦ Arrival at Maumere & Hotel Check-in. The tour will be started at 7.30 am. Transfer from local Hotel to Nanga Hale port. Nanga Hale is a small fishing village it's one of the villages affected by the tsunami in 1992. Right now, this village is one of the gateways for the people whom living at some small islands in near Maumere Town. Also, the gates for the guests who like to island hopping around.
- ✦ Sail to Babi Island, tsunami in 1992 was caused a fault in the seabed of Babi Island in the form of a ravine, its 100 meters long and 10 until 20 meters deep. This crack was the epicenter when the tsunami struck. Now it becomes a snorkeling and diving sites.

Nanga Hale Port



Maumere Village



Babi Island

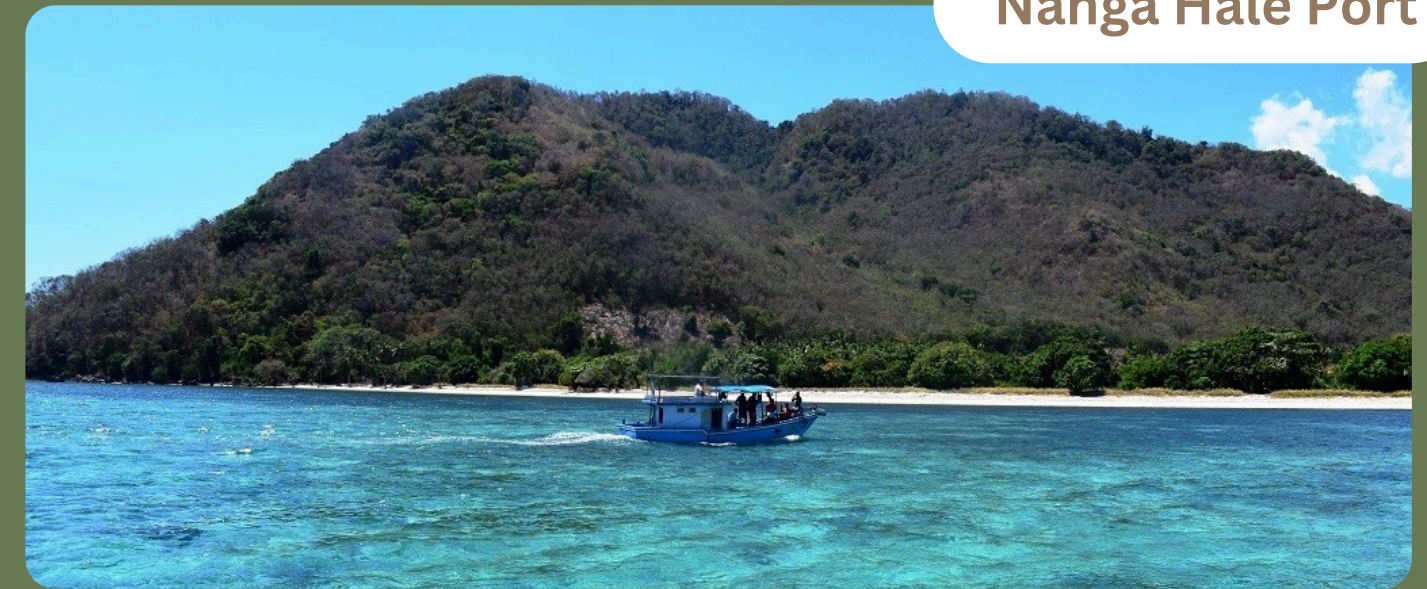


Day 1 & 2

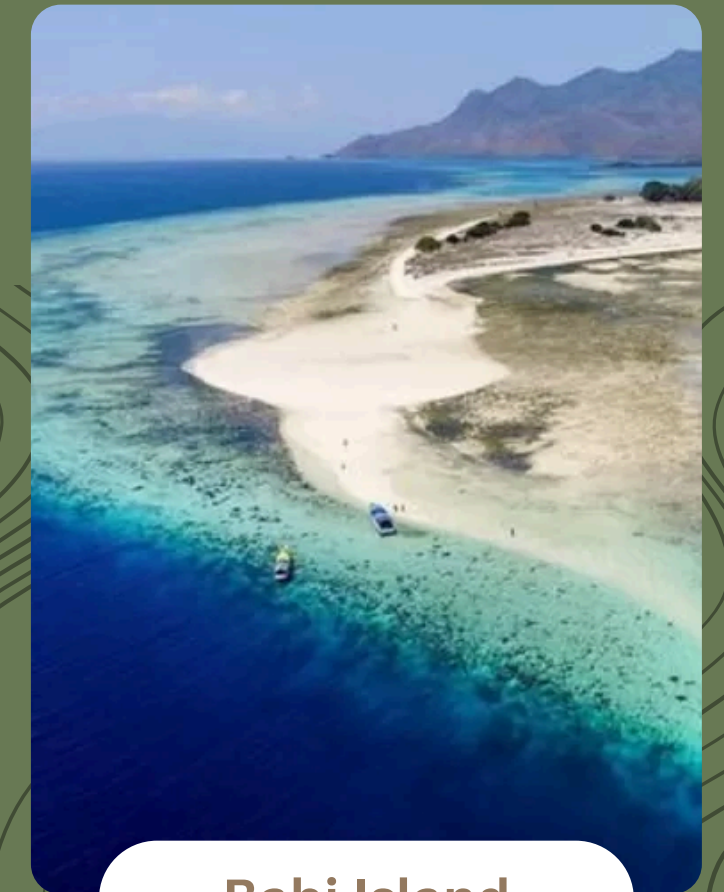
ITINERARY DETAILS

- ✦ Continue to Pangabatan Beach Island, the island which you can enjoy the beach and swimming around.
- ✦ Go to the last place is Koja Doi village, it is a tourist village that is included in the top of 17 categories of the 2019 Indonesia Sustainable Tourism Award from the Ministry of Tourism. This village area consists of 2 islands, namely Koja Doi Island and Koja Besar Island. The village was originally famous for its unique 680-meter-long stone bridge and island without motorized vehicles. Koja Doi is also known for its 30-meter-high black ancient stone hills which seem to be neatly stacked, you can enjoy the beauty of Koja Doi Island from the hills. After then that back to Nanga Hale port.

Nanga Hale Port



Maumere Village



Babi Island



Day 3

HIKING EGON VOLCANO

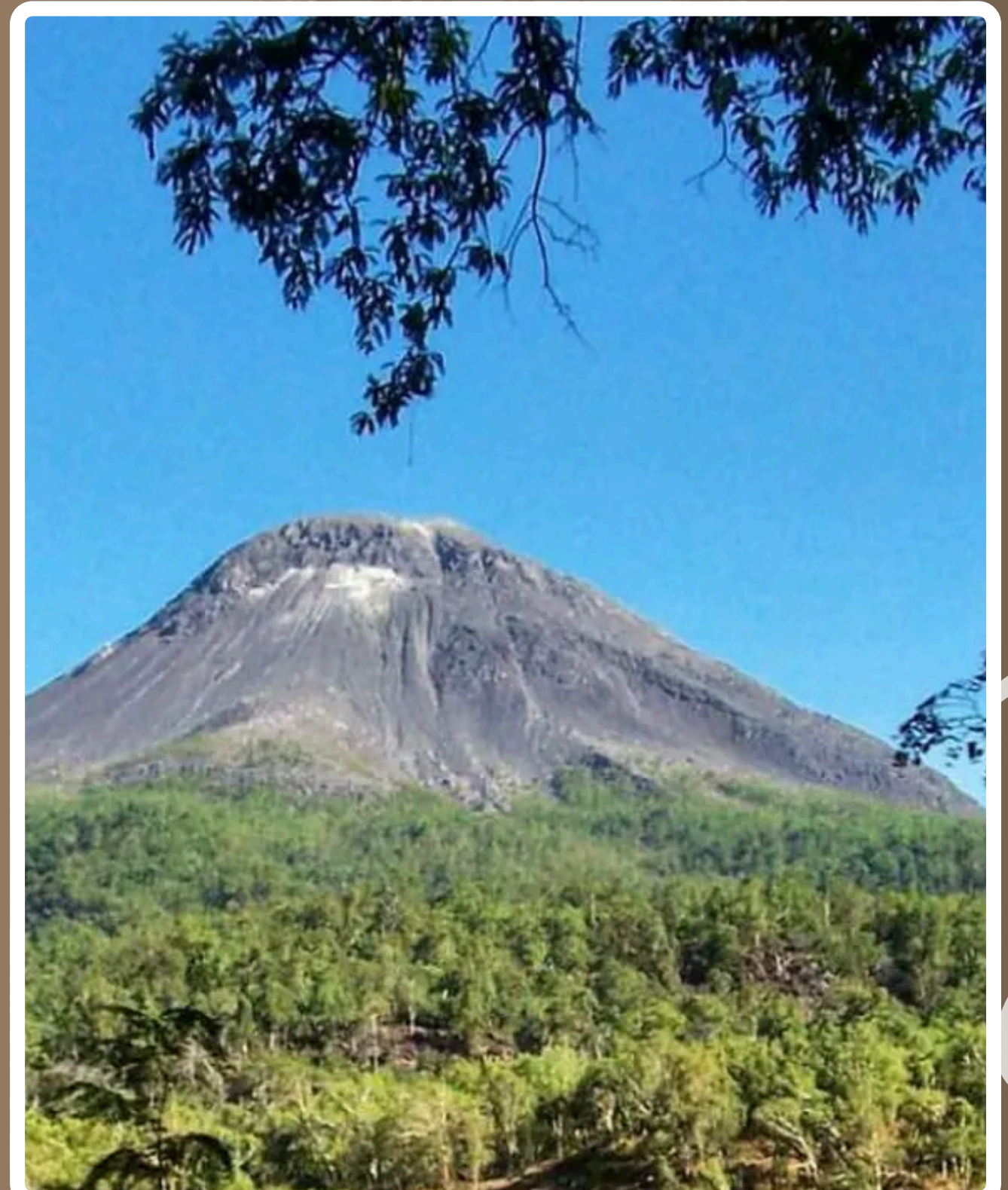
Activities on DAY 3

- Morning call at 1.45 AM
- Hotel – Hiking point (45 minutes)
- Hiking point – Peak of the Summit (2-3 hours)
- Free Program in the Afternoon

Transportation included : Private Car

Accommodation : Coconut Beach Resort, Maumere/similar

Meals included : Breakfast



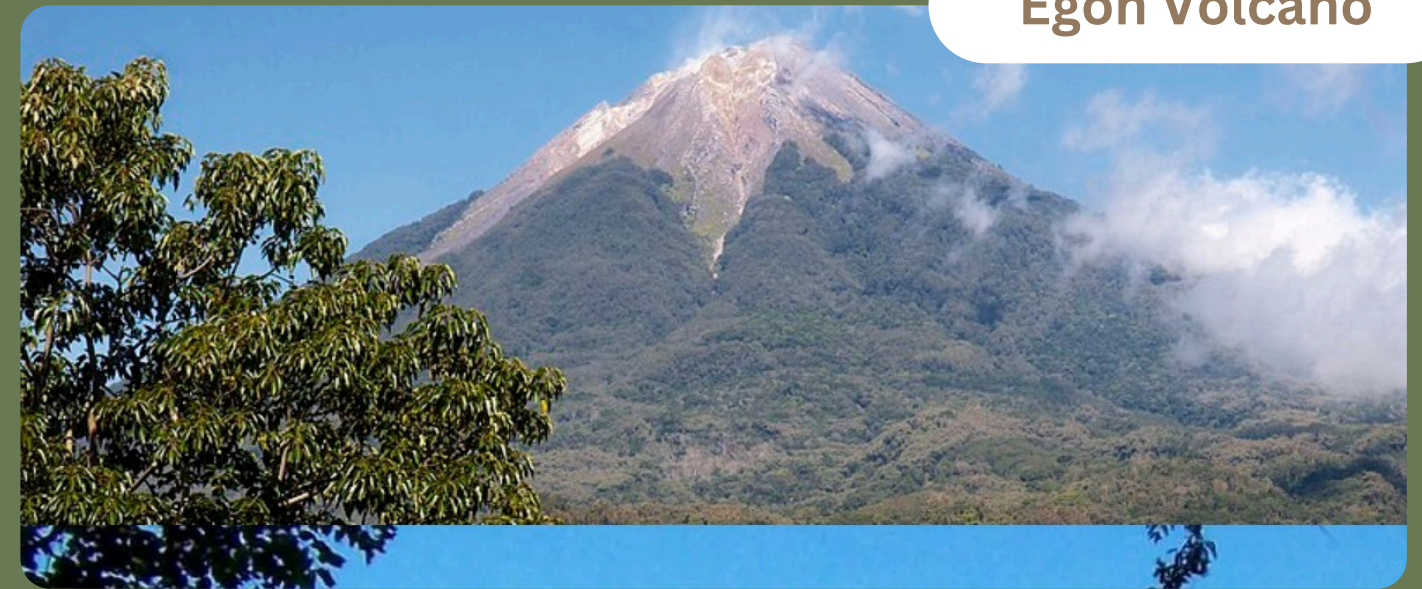


Day 3

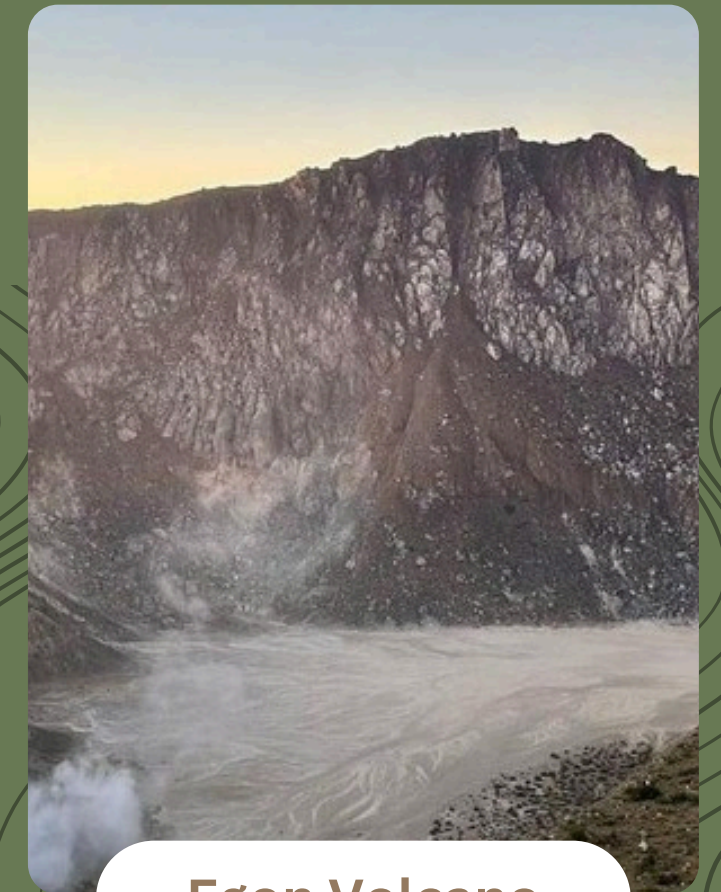
ITINERARY DETAILS

- ✦ **Mount Egon** is a stratovolcano located in the southeastern part of the island of Flores, Indonesia in the area of Maumere bay. A landslide during the eruption on 29 January 2004 forced 6,000 people to evacuate the area.
- ✦ Activity of **Gunung Egon** on 15 April 2008 forced thousands of people to evacuate. finding the start of the trail (beyond village at 788m) It takes about 1 hour to reach by car from Hotel | Maumere – head east on the main road towards Larantuka, the trail becomes vaguer and a little more difficult as you negotiate volcanic scree beneath the impressive crater cliffs, the trail then flattens out and leads over loose, damp volcanic sand to the lowest point of the rim or the summit (1,598m).

Egon Volcano



Egon Volcano



Egon Volcano



Day 3

ITINERARY DETAILS

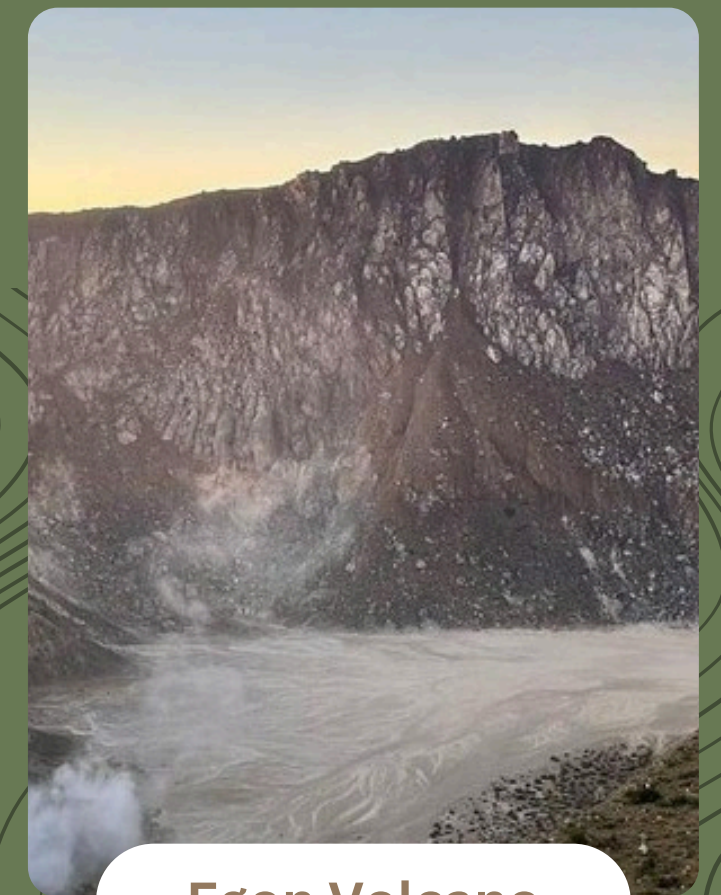
📍 On the way down with the same route your guide will be encourage you to leave some small change to express thanks for making a safe return at a special area off the trail (1,173m) where there is a small metal plate.

- Trekking Sticks, Jacket, Trekking shoes.
- Plastic Bag/ Trash Bag to dispose garbage.
- Daypack bag to carry your personal belongings.
- Water Bottle/Tumbler.
- Umbrella (optional).
- Headlamp.
- Binocular, Camera, trekking map and compass, knife, reading materials, lip guard
- Toilet papers.

Egon Volcano



Egon Volcano



Egon Volcano



Day 4

CHECK OUT HOTEL - VISIT LEPO LORUN IKAT WEAVING STUDIO –
KOKA BEACH- MONI VILLAGE

Activities on DAY 4

- Maumere City Tour (1 Hour)
- Maumere Town – Lepo Lorun Ikat Weaving Studio (45 minutes)
- Lepo Lorun – Koka Beach (2 hours)
- Koka Beach – Moni Eco lodge (2 hours)

Transportation included : Private Car

Accommodation : Kelimutu Eco Lodge /similar

Meals included : Breakfast | Lunch | -





Day 4

ITINERARY DETAILS

- ✦ Check out Hotel at 9.30 AM.
Start to explore the Maumere town. You will visit the Kristus Raja Statue and Cathedral.
- ✦ Continue to Lepo Lorun. Lepo Lorun means 'House of Weaving' and is all about Ikat traditional weaving techniques, Sikka music and wonderful local foods. It is a social community of traditional women weavers supporting women empowerment and preserving Sikka cultural heritage.
- ✦ You can join in the weaving to learn these traditional techniques. And also, you will have lunch with local foods here.

Koka Beach



Maumere Roads



Lepo Lorun



Day 4

ITINERARY DETAILS

- ✦ Then you going to Koka Beach. It beach is rather double beach or two bays with quite rough tide and not very touristy, this make it a magical place. You can do beaches and swimming around.
- ✦ In the afternoon, you will drive to Moni village where you will get a good Lodge or hotel for stay.

Koka Beach



Maumere Roads



Lepo Lorun



Day 5

KELIMUTU LAKE – WOLOGAI VILLAGE – THE HOUSE OF IR. SOEKARNO'S EXILE – LOCAL MARKET

Activities on DAY 5

- Hotel | Lodge – Kelimutu Lake (1 hour)
- Hotel | Lodge – Wologai Village (1 hour)
- Wologai Village – Exile House of Ir. Soekarno (1 hour 45 minutes)
- City tour at Ende town

Transportation included : Private Car

Accommodation : Passport House, Ende /similar

Meals included : Breakfast | - | Dinner



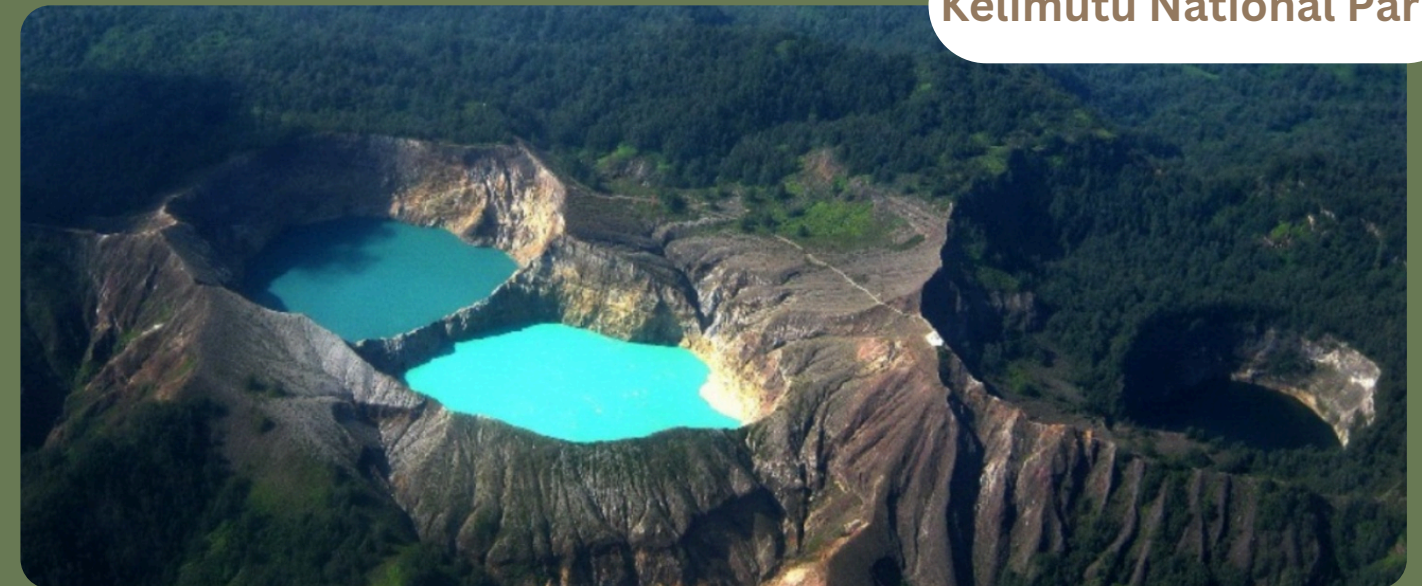


Day 5

ITINERARY DETAILS

- ✦ Morning call at 4.15AM and En route at 4.45 AM to Kelimutu national park entrance.
- ✦ You will do soft trek and hope you will get a good sunrise on top of the hill Kelimutu. The lakes are located in the middle part on top of mount Kelimutu, it has three volcanic crater lake that has different color. Then back drive to the hotel for have a breakfast and check out.
- ✦ Continue to Wologai Village, Wologai is one of the villages in the Ende district with well-maintained houses built in the traditional Lioness architectural style.

Kelimutu National Park



Ir. Soekarno Exile House



Wologai Village

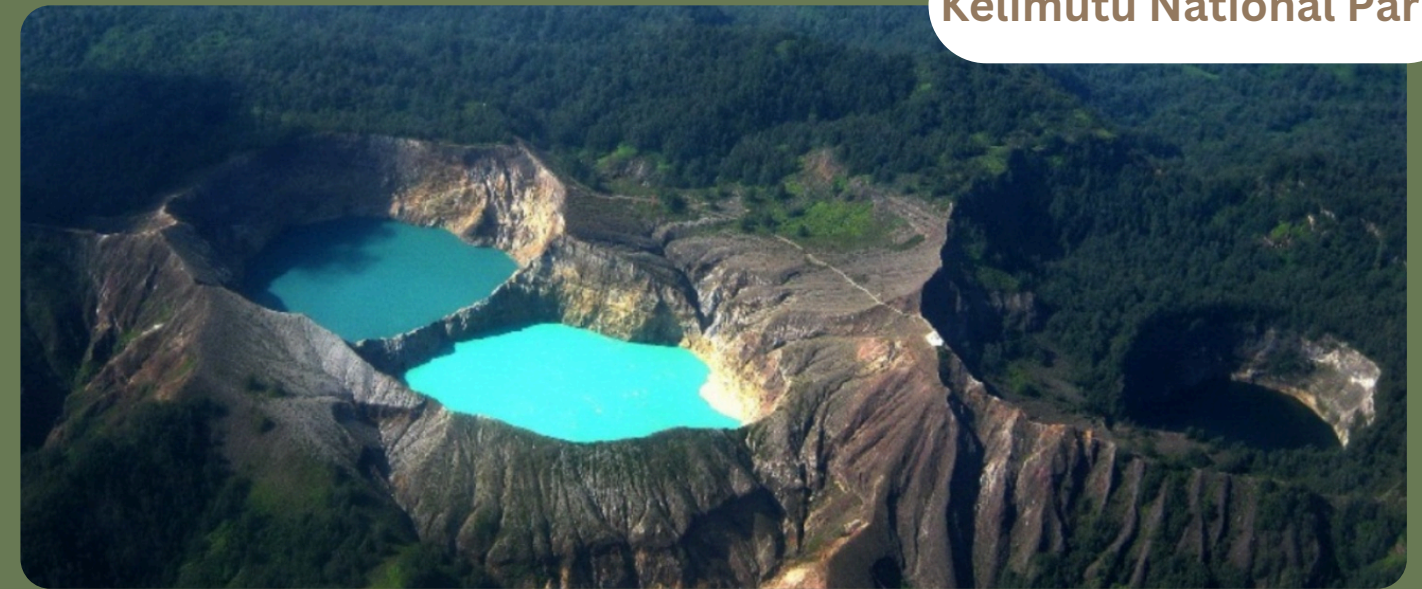


Day 5

ITINERARY DETAILS

- ✦ Then you will move to Exile House of Ir. Soekarno. This is the house that Sukarno the first president of Indonesia was ousted to from Java Island by the Dutch Colonial authorities for being a political activist.
- ✦ In the afternoon, you will do city tour at Ende town and enjoy the sunset in the beach.

Kelimutu National Park



Ir. Soekarno Exile House



Wologai Village



Day 6

ENDE TOWN – BLUE STONE BEACH – RIUNG VILLAGE

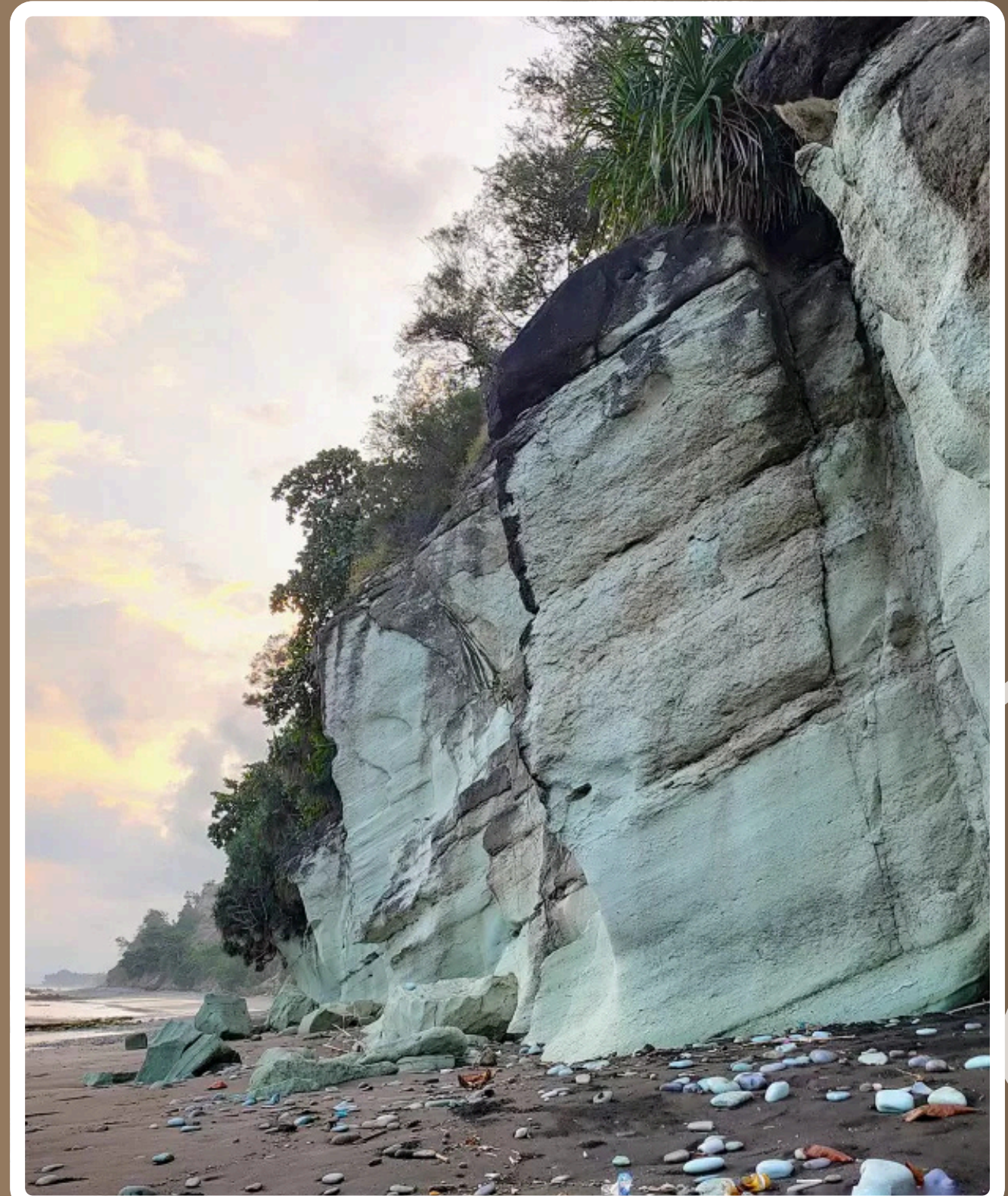
Activities on DAY 6

- Ende Town (Your hotel) – Blue Stone Beach (1.45 minutes)
- Blue Stone Beach – Riung Village (3 hours 30 minutes)

Transportation included : Private Car

Accommodation : Riung Homestay /similar

Meals included : Breakfast | Lunch | -





Day 6

ITINERARY DETAILS

- ✦ Check out from hotel at 10.00 AM
- ✦ We begin with the beach and water activities at Blue Stone Beach, this striking beach is composed almost entirely of unusual turquoise, pastel blue, and reddish stones, a geological marvel. And also, you will have a lunch at one of local restaurant around this beach too.
- ✦ Then you have long drive to the Riung Village. At here is no activities (take a rest for tomorrow)

Blue Stone Beach



Ikat Market



Riung



Day 7

HOPPING AROUND 17 ISLANDS OF RIUNG – SOA HOTSPRING – BAJAWA TOWN

Activities on DAY 7

- Riung Port – Kililawar Island (1 hour)
- Kililawar Island – Tembang Island (30 minutes)
- Tembang Island - Rutong Island (30 minutes)
- Rutong island – Riung Port (45 minutes)
- Riung Village – Soa Hotspring (2 hours)
- Soa Hotspring – Bajawa Town | Hotel (2 hours)

Transportation included : Private Car

Accommodation : Manulalu Jungle Bungalow /similar

Meals included : Breakfast | - | -





Day 7

ITINERARY DETAILS

- ✦ Start at earlier in the morning to hopping Riung Islands, the 17 islands of national park are an incredible day out in the sea, visiting different small desert islands by the wooden private boat and including a delicious fish BBQ at the beach.
- ✦ Then continue Soa\Mangeruda hot spring is located in the Soa sub-district. Soa hot springs offer you the warmest it about 30-40°C. The spring water is believed to have a curative effect for those suffering from skin conditions. Howsoever, the experience of taking a warm, soothing bath in a beautiful, natural atmosphere is definitely a true delight for your body and soul.
- ✦ Continue to Bajawa Regency

Soa Hotspring



Riung



Riung



Day 8

MANULALU JUNGLE BUNGALOW - BENA VILLAGE – TULULELA VILLAGE –
CITY TOUR – SUNSET ON WOLOBOBO HILL

Activities on DAY 8

- Manulalu Jungle Bungalow - Bena Village (45 minutes)
- Bena Village – Tululela Village (30 minutes)
- City tour at Bajawa Town
- Sunset at Wolobobo hill

Transportation included : Private Car

Accommodation : Manulalu Jungle Bungalow /similar

Meals included : Breakfast | - | -





Day 8

ITINERARY DETAILS

- ✦ You will explore and talk with the people of Bena Village. it is one of megalithic village in Ngada Regency. you still can see hundreds of stone age preserved and culturally maintained by the locals. Also, here there are 9 clans living in 45 houses. These are the Dizi, the Dizi Azi, the Wahtu, the Deru Lalulewa, the Deru Solamae, the Ngada, the Khopa, and the Ago. Each clan lives on a different level of the terraced village, with the Bena clan in its center.
- ✦ Continue to another of Bena clan it called is Tululela Village, it takes about one hour to trek through a beautiful forest to access it.
- ✦ In the afternoon, you will go city tour and sunset on Wolobobo Hill

Bena Village



Tululela



Bajawa Town



Day 9

HIKING INERIE MOUNT – MALANAGE HOTSPRING

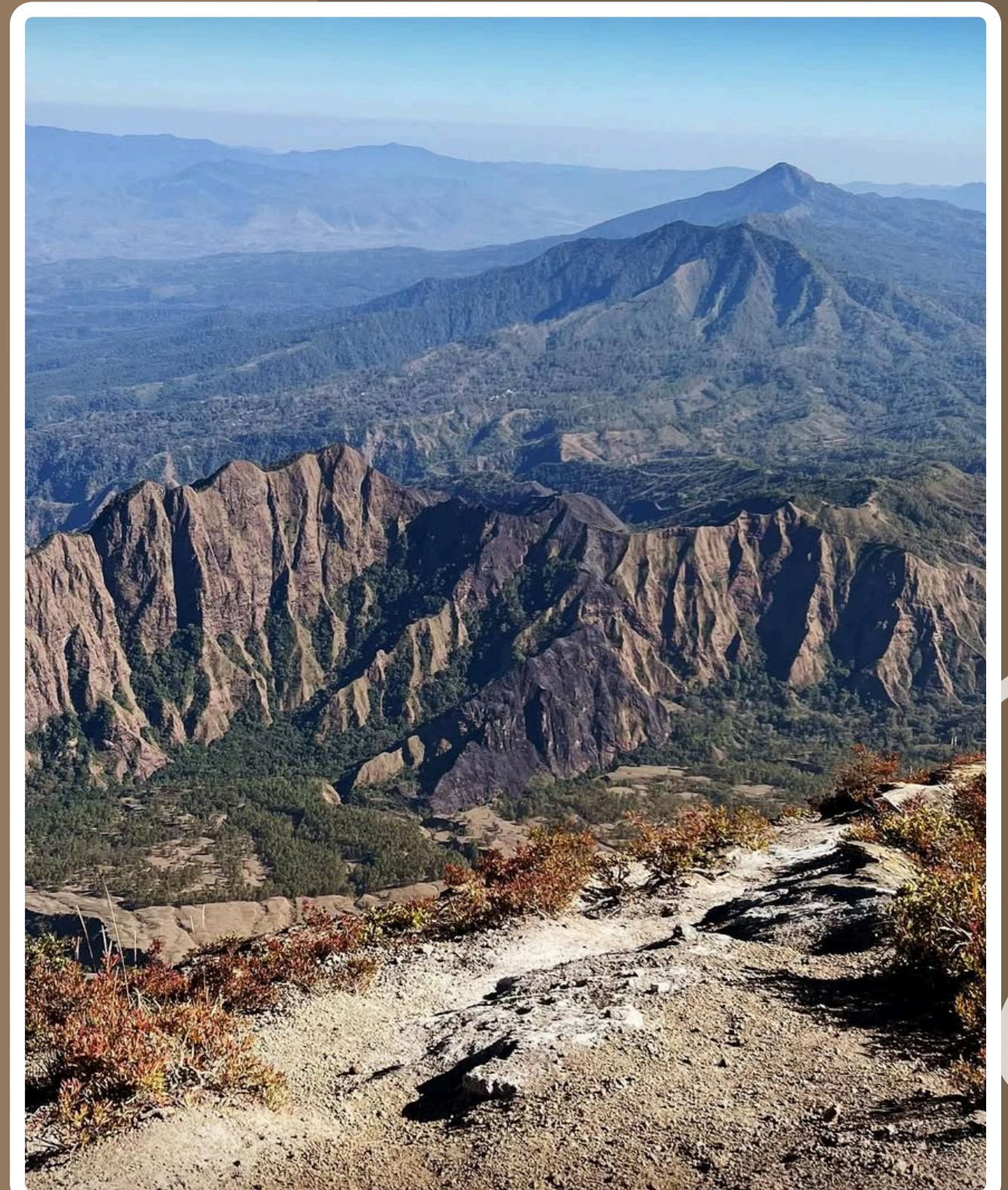
Activities on DAY 9

- Morning Call at 1.15 AM
- Hotel – Hiking point (30 minutes)
- Hiking point – Top the summit (4 hours)
- Malanage Hot-spring

Transportation included : Private Car

Accommodation : Manulalu Jungle Bungalow /similar

Meals included : Breakfast | -| -





Day 9

ITINERARY DETAILS

- ✦ Mount Inerie (Local Language Ine is Mother & Rie is beautiful) is a stratovolcano mountain located in the southern part of Bajawa City Center, Flores Island , precisely in Aimere District , Ngada Regency , East Nusa Tenggara Province , Indonesia .
- ✦ Mount Inerie is the largest volcano on Flores Island, the peak of this mountain is the highest point on Flores Island. If you see this mountain from a distance, its shape really resembles a pyramid with a perfectly pointed peak and is majestic to look at.
- ✦ The starting point of the climb is Watumeze Village which is at an altitude of 900 meters above sea level, that means you are about to climb to the altitude of 1,300 meters above sea level, not too far right? The time to climb is around 02.00 am so you can see the sunrise from the top of the mountain.

Inerie Volcano



Malanage Hot Spring



Inerie Volcano



Day 9

ITINERARY DETAILS

- ✦ Well, the big obstacle is the fairly difficult path. Yup, this mountain climbing path is dominated by gravel and volcanic rocks up to the peak. With this contour, it is difficult to step on, especially when it rains, the road becomes slippery beyond belief.
- ✦ In the afternoon, you will have a relaxing at Malanage hot-spring. Here, in a pretty forest grove at the confluence of a hot and a cold river, a series of shallow, babbling pools provide the perfect place relax and let the warm water melt away whatever aches your trekking and sightseeing around Bajawa has left you with.

Inerie Volcano



Malanage Hot Spring



Inerie Volcano



Day 9

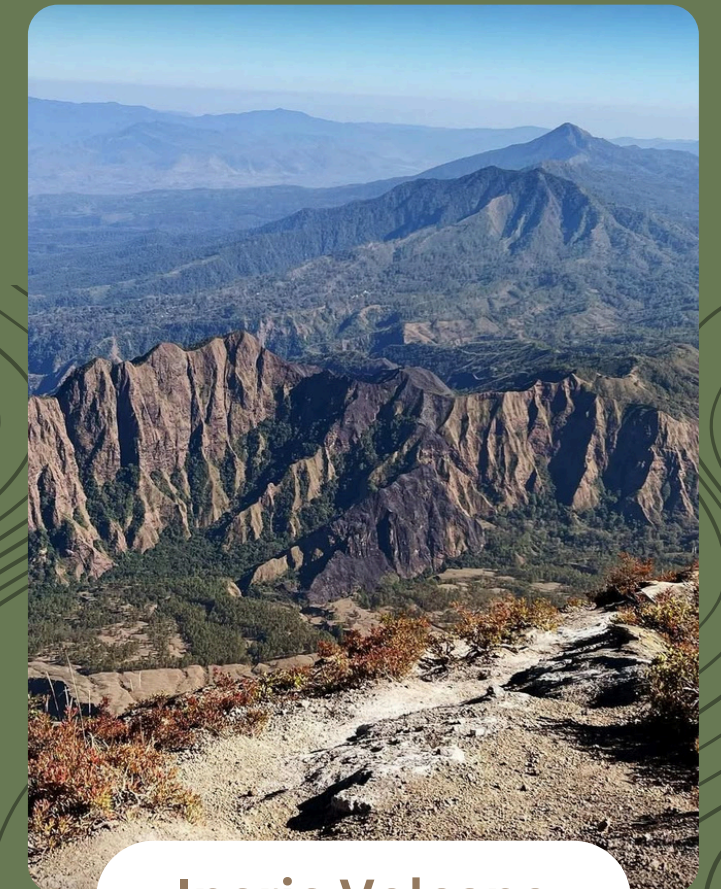
ITINERARY DETAILS

- Trekking Sticks, Jacket, Trekking shoes.
- Plastic Bag/ Trash Bag to dispose garbage.
- Daypack bag to carry your personal belongings.
- Water Bottle/Tumbler.
- Umbrella (optional).
- Headlamp.
- Binocular, Camera, trekking map and compass, knife, reading materials, lip guard
- Toilet papers.

Inerie Mountain



Malanage Hot Spring



Inerie Volcano



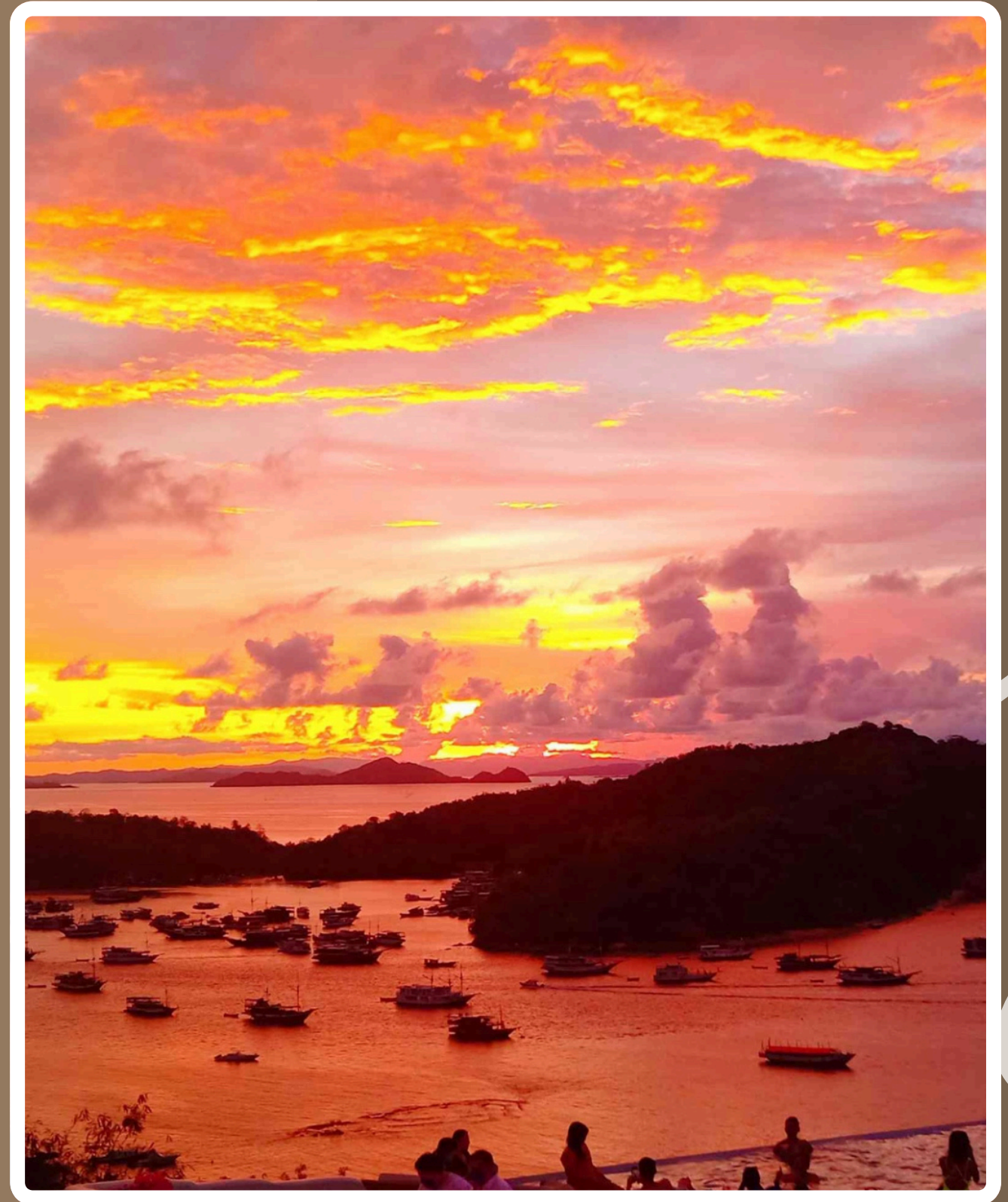
Day 10

DAY 10: SOA AIRPORT OF BAJAWA TOWN / DRIVING TO LABUAN BAJO

Activities on DAY 10

- Bajawa Town – Soa Airport of Bajawa Town (45 minutes) | Bajawa Town – Labuan Bajo Town (8 to 9 hours drive)

Transportation included : Private Car
Meals included : Breakfast



Additional



WHAT'S INCLUDED?

- PICK UP FROM AIRPORT & TRANSFER TO AIRPORT
- PROFESIONAL TOUR GUIDE
- BREAKFAST, LUNCH & DINNER AS ITINERARY
- ENTRANCE FEE TO ALL OF DESTINATIONS
- PRIVATE CAR (WITH FUEL) DURING TRIP IN FLORES ISLAND WITH EXPERIENCE DRIVER
- HOTEL ROOM EACH TOWN (ONE ROOM FOR 2 PAX)
- SMALL IKAT WEAVING (FOR WELCOMING)
- MINERAL WATER
- PRIVATE LOCAL WOODEN BOAT FOR EXPLORE ISLAND IN NORTH MAUMERE TOWN & RIUNG - 17 ISLANDS MARINE PARK
- SNORKELING GEAR
- TAX & SERVICES

WHAT'S EXCLUDED?

- AIR PLANE TICKET & AIRPORT TAX
- DONATION/TIP
- INSURANCE
- DIVING PACKAGE
- ALCOHOL
- LAUNDRY, TELEPHONE
- OTHERS SPECIAL REQUEST

Price per Pax



Price in Indonesian Rupiah (IDR)

- IDR 44,718,960.00 - 1 PAX
- IDR 23,345,080.00 - 2 PAX
- IDR 18,017,596.67 - 3 PAX
- IDR 18,008,705.00 - 4 PAX
- IDR 15,879,490.00 - 5 PAX
- IDR 15,216,446.67 - 6 PAX
- IDR 14,158,587.14 - 7 PAX
- IDR 13,500,492.50 - 8 PAX
- IDR 12,818,507.78 - 9 PAX
- IDR 13,705,120.00 - 10 PAX
- IDR 13,871,130.00 - 11 PAX
- IDR 13,493,755.00 - 12 PAX
- IDR 13,022,130.00 - 13 PAX
- IDR 13,376,408.57 - 14 PAX
- IDR 13,005,410.00 - 15 PAX

Price in Indonesian Rupiah (IDR)

- IDR 12,936,398.75 - 16 PAX
- IDR 12,608,530.00 - 17 PAX
- IDR 12,427,091.11 - 18 PAX
- IDR 12,833,740.53 - 19 PAX
- IDR 12,659,185.00 - 20 PAX
- IDR 12,795,949.05 - 21 PAX
- IDR 12,638,980.00 - 22 PAX
- IDR 12,804,712.61 - 23 PAX
- IDR 12,660,459.17 - 24 PAX
- IDR 12,448,546.00 - 25 PAX
- IDR 12,427,495.38 - 26 PAX
- IDR 12,260,685.56 - 27 PAX
- IDR 12,597,255.00 - 28 PAX
- IDR 12,714,661.03 - 29 PAX
- IDR 12,602,260.00 - 30 PAX