

wonderful
indonesia



8D/7N FLORES OVERLAND TRIP

CODE: 8DFLOV

TRAVEL PERIOD: UNTIL MARCH 31st, 2026



About This Tour



Flores is one of the Lesser Sunda Island, a group of islands in the eastern half Indonesia. Administratively, it forms the largest island in the East of Nusa Tenggara Province. **Flores island is the most fascinating and beautiful island.**

Long hidden in the shadows of its more famous neighbor of Bali and Lombok, take time to marvel at some of the **wonder of Flores.**

Here, there are some traditional village, you can swim in pristine lakes and waterfalls, snorkeling at one of the best sites, plenty of beach such as black white and pink beaches, go kayaking among craggy coasts and mangrove shores, hiking at the Volcano mounts, explore mysterious caves and be warmly welcomed by the island's people in their rituals, dances and daily life!



About This Tour



Flores is located **east of Sumbawa** and **Komodo Island**, where Komodo island is in East Nusa Tenggara Province.

The national park was found in 1980 to protect the Komodo dragon, the largest lizard in the earth, later it was dedicated to protection other species including marine species. In 1991 the national park was declared a UNESCO world Heritage Site, it is considered **one of the world's 25 biodiversity hotspots**.



Itinerary Details



Day 1

DAY 1: ARRIVE IN FRANS SEDA AIRPORT OF MAUMERE – CHECK IN & ENJOY HOTEL

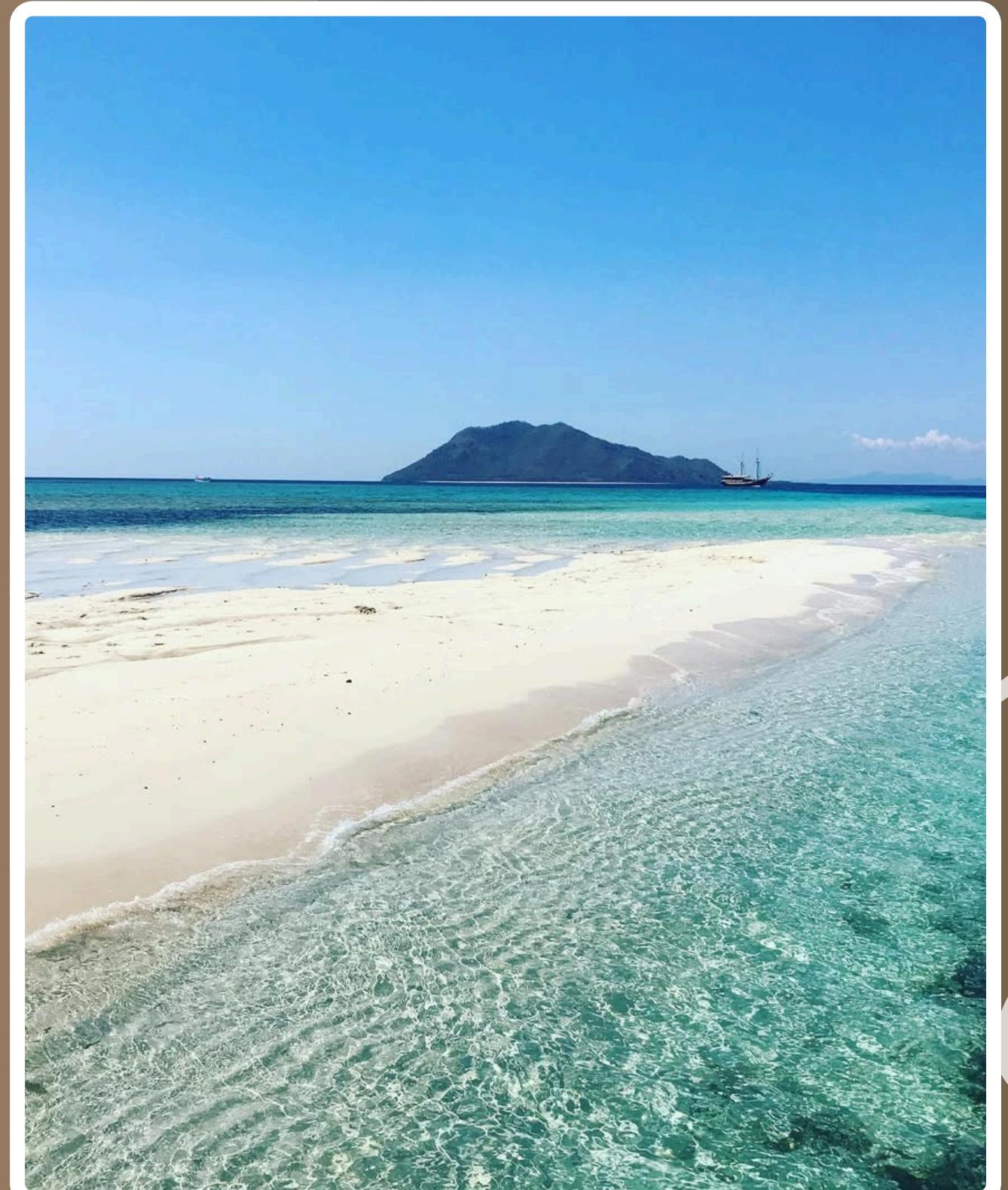
Activities on Day 1

- Arrive recommended (12.00 – 15.00)
- Transfer direct to hotel
- Free time | no activities

Transportation included : Private Car

Accommodation : Coconut Beach Resort, Maumere/similar

Meals included : Lunch | Dinner





Day 2

DAY 2: EXPLORE ISLAND IN FRONT OF MAUMERE TOWN (BABI ISLAND - PANGABATANG ISLAND - KOJA DOI & KOJA GETE VILLAGE)

Activities on Day 2

- Breakfast start at 6.00 to 7.00
- Local Hotel – Nanga Hale Port (50 minutes)
- Nanga Hale Port – Babi Island (1.30 minutes)
- Babi Island – Pangabatang Island (45 minutes)
- Pangabatang Island – Koja Doi Village (45 minutes)

Transportation included : Private Car and Local Wooden Boat/Open Deck

Accommodation : Coconut Beach Resort, Maumere/similar

Meals included : Breakfast | Lunch | Dinner

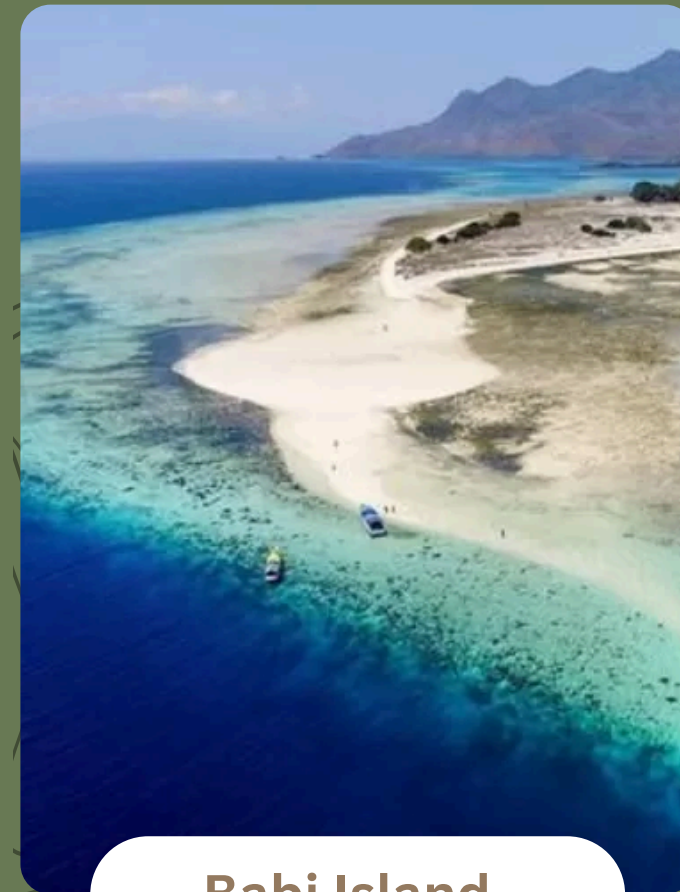
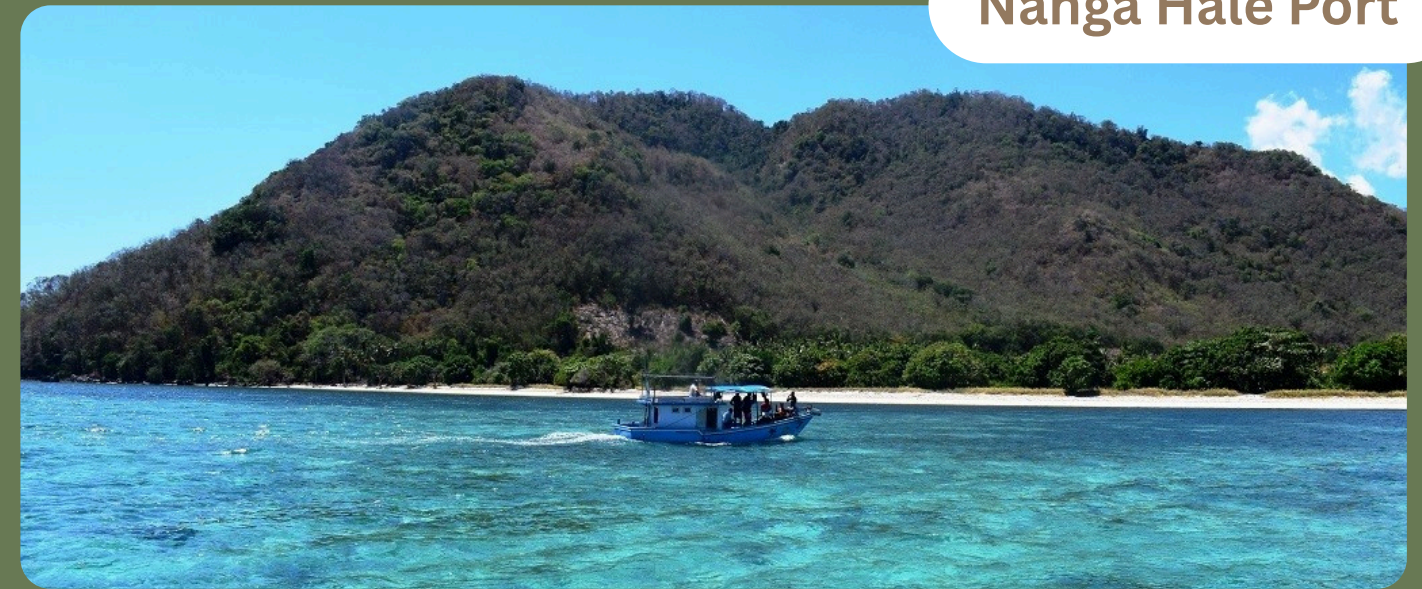


Day 2 - ITINERARY DETAILS

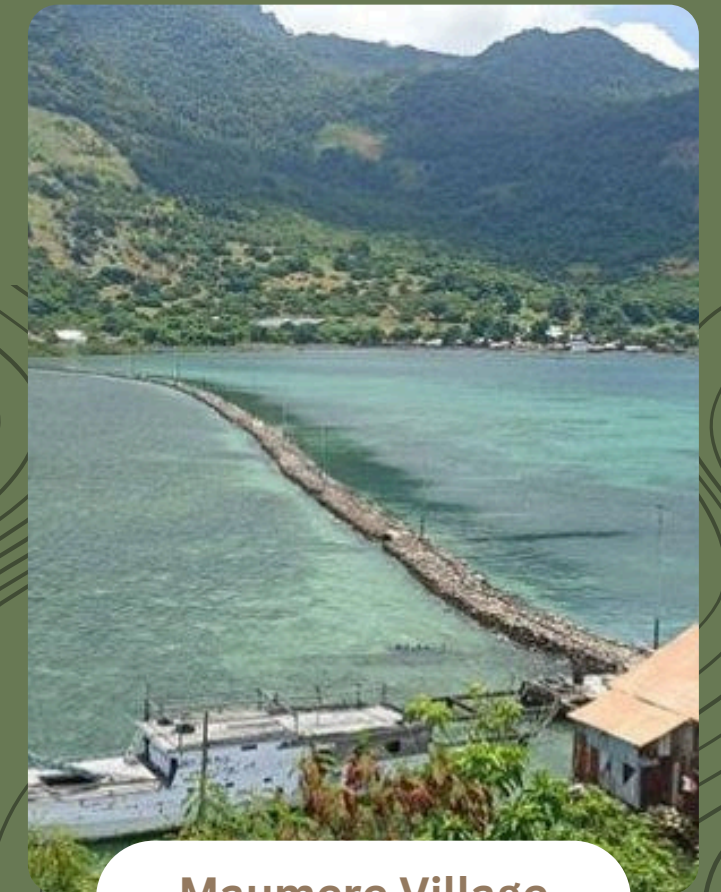


- 📍 You start at 7.30 am. Will be transported from local Hotel to Nanga Hale port, Nanga Hale is a small fishing village it's one of the villages affected by the tsunami in 1992. Right now, this village is the gate ways for the people whom living at some small islands in the fronts of the Maumere town. Also, the gates for the guess who like to visits around.
- 📍 Sail to Sesabi island, tsunami in 1992 was caused a fault in the seabed of Babi Island in the form of a ravine, its 100 meters long and 10 until 20 meters deep. This crack was the epicenter when the tsunami struck. Now it becomes a snorkeling and diving sites.
- 📍 Continue to Pangabatan Beach Island, which`s you will enjoy the beach and swimming around.
- 📍 Go to the last place is Koja Doi village, it is a tourist village that is included in the top of 17 categories of the 2019 Indonesia Sustainable Tourism Award from the Ministry of Tourism. This village area consists of 2 islands, namely Koja Doi Island and Koja Besar Island. The village was originally famous for its unique 680-meter-long stone bridge and island without motorized vehicles. Koja Doi is also known for its 30-meter-high black ancient stone hills which seem to be neatly stacked, you can enjoy the beauty of Koja Doi Island from the hills. After then that back to Nang Hale

Nanga Hale Port



Babi Island



Maumere Village



Day 3

DAY 3: VISIT LEPO LORUN IKAT WEAVING STUDIO – KOKA BEACH – MONI VILLAGE

Activities on DAY 3

- City Tour (1 Hour)
- Maumere Town – Lepo Lorun (45 minutes)
- Lepo Lorun – Koka Beach (2 hours)
- Koka Beach – Moni Eco lodge (2 hours)

Transportation included : Private Car

Accommodation : Kelimutu Eco Lodge, Moni/similar

Meals included : Breakfast | Lunch | Dinner



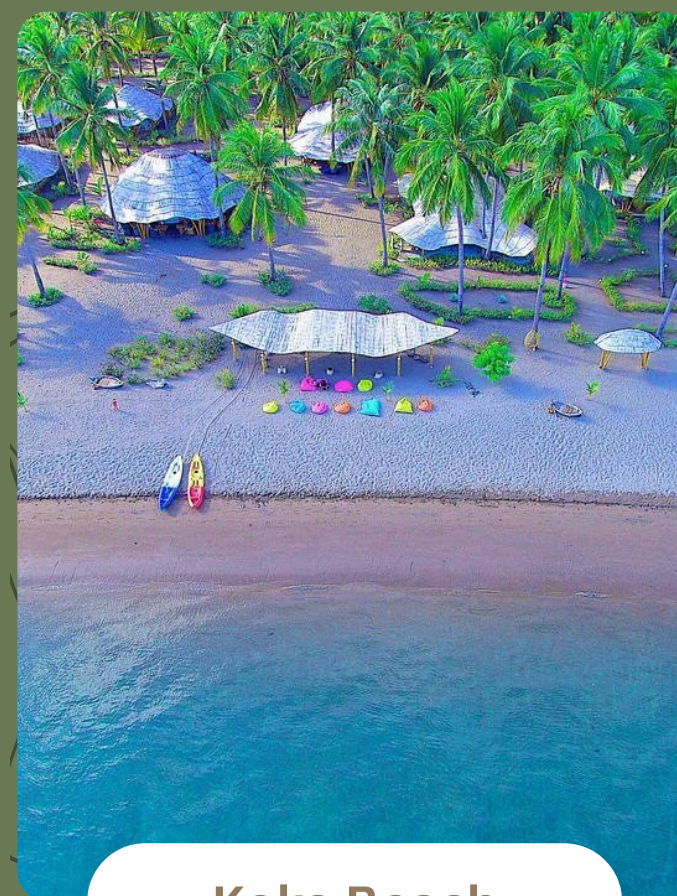


Day 3

ITINERARY DETAILS

- 📍 Check out Hotel at 9.30 am. Start to explore the Maumere town. You will visit the Kristus Raja Statue and Cathedral.
- 📍 Continue to Lepo Lorun. Lepo Lorun means 'House of Weaving' and is all about Ikat traditional weaving techniques, Sikka music and wonderful local foods. It is a social community of traditional women weavers supporting women empowerment and preserving Sikka cultural heritage. You can join in the weaving to learn these traditional techniques. And also, you will have local lunch foods here.
- 📍 Then you going to Koka Beach. It beach is rather double beach or two bays with quite rough tide and not very touristy, this make it a magical place. You can do beaches and swimming around.
- 📍 In the afternoon, you will drive to Moni village where you will get a good Lodge or hotel for stay.

Lepo Lorun



Koka Beach



Moni Village



Day 4

DAY 4: SUNRISE KELIMUTU LAKE – VISIT WOLOGAI VILLAGE – MUSEUM SOEKARNO

Activities on DAY 4

- Hotel | Lodge – Kelimutu Lake (1 hour)
- Hotel | Lodge – Wologai Village (1 hour)
- Wologai Village – Exile House of Ir. Soekarno (1.45 minutes)
- City tour at Ende town

Transportation included : Private Car

Accommodation : Passport House, Ende/Similar

Meals included : Breakfast | Lunch | Dinner





Day 4

ITINERARY DETAILS

- 📌 Get up at 4.15 and start drive at 4.45 to entry office
- 📌 You will do soft trek and hope you will get a good sunrise on top of the hill Kelimutu. Which is located of those lakes in the middle of the top of mount Kelimutu, it has three volcanic crater lakes that different in color. Then back drive to the hotel for have a breakfast and check out.
- 📌 Continue to Wologai Village, Wologai is one of the villages in the Ende district with well-maintained houses built in the traditional Lioness architectural style.
- 📌 Then you will move to Exile House of Ir. Soekarno. This is the house that Sukarno the first president of Indonesia was ousted to from Java Island by the Dutch Colonial authorities for being a political activist.
- 📌 In the afternoon, you will do city tour at Ende town and enjoy the sunset in the beach.

Kelimutu Lake



Wologai Village



Museum Soekarno



Day 5

DAY 5: VISIT IKAT WOVEN MARKET – PENGGAJAWA (BLUE STONE) BEACH – RIUNG VILLAGE

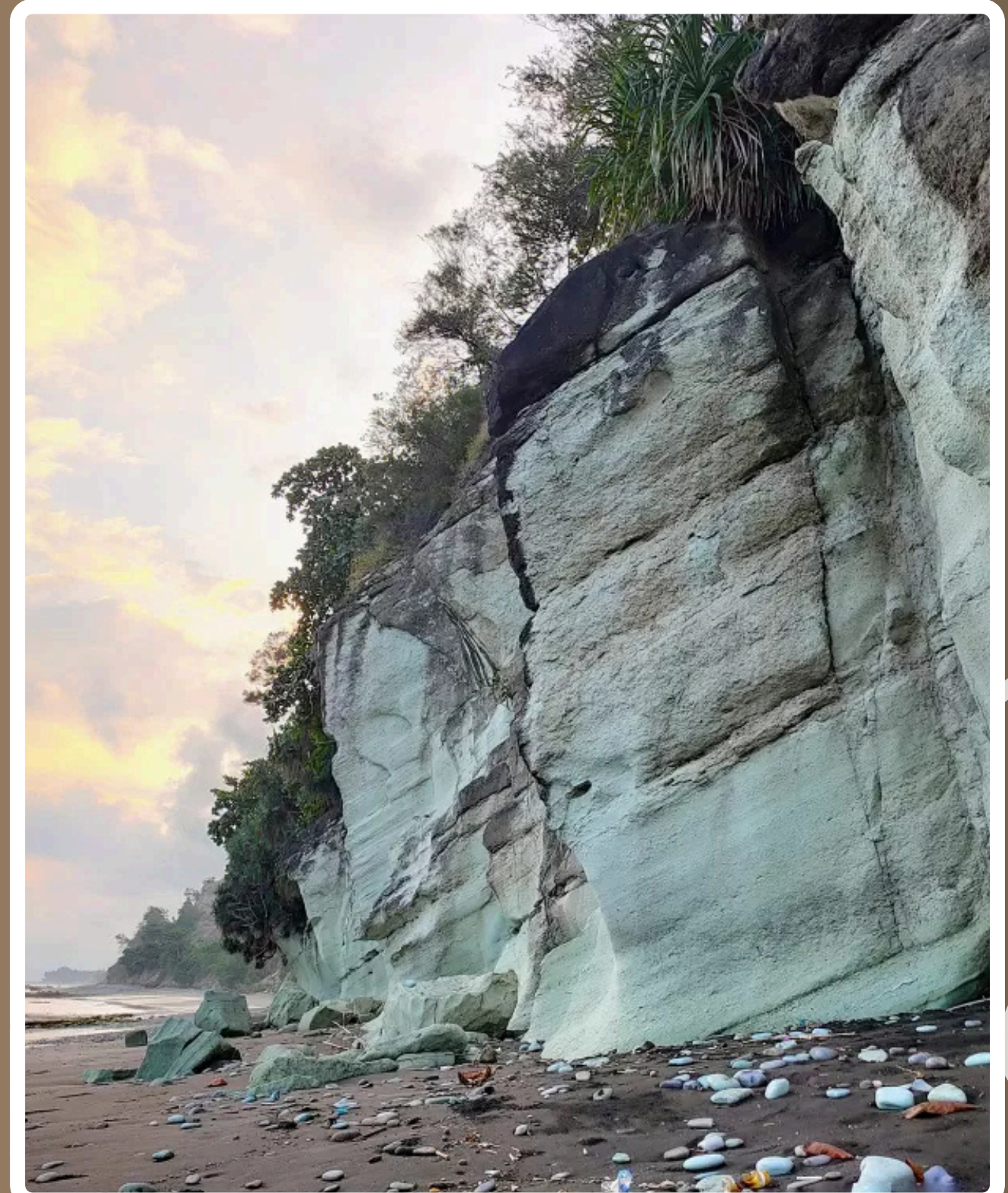
Activities on DAY 5

- Ende Town (Your hotel) – Blue Stone Beach (1.45 minutes)
- Blue Stone Beach – Riung Village (3.30 hours)

Transportation included : Private Car

Accommodation : Riung Homestay, Riung/similar

Meals included : Breakfast | Lunch | Dinner





Day 5

ITINERARY DETAILS

- ✦ Check out at hotel 10.00 am
- ✦ We begin with the beach and water activities at Blue Stone Beach, this striking beach is composed almost entirely of unusual turquoise, pastel blue, and reddish stones, a geological marvel. And also, you will have a lunch at one of local resto around this beach too.
- ✦ Then you have long drive to the Riung Village. At here is no activities (take a rest for tomorrow)

Ikat Woven Market



Blue Stone



Riung Village



Day 6

DAY 6: FULL DAY TOUR EXPLORE 17 ISLANDS MARINE PARK – MANGGERUDA HOT SPRING – BAJAWA TOWN

Activities on DAY 6

- Riung Port – Kelalawar Island (1 hour)
- Kelalawar Island – Tembang Island (30 minutes)
- Tembang Island - Rutong Island (30 minutes)
- Rutong island – Riung Port (45 minutes)
- Riung Village – Soa Hotspring (2 hours)
- Soa Hotspring – Bajawa Town|Resort (1 hours)

Transportation included : A Local Wooden Boat/Open Deck
Accommodation : Manulalu Jungle Resort, Bajawa/similar
Meals included : Breakfast | Lunch | Dinner



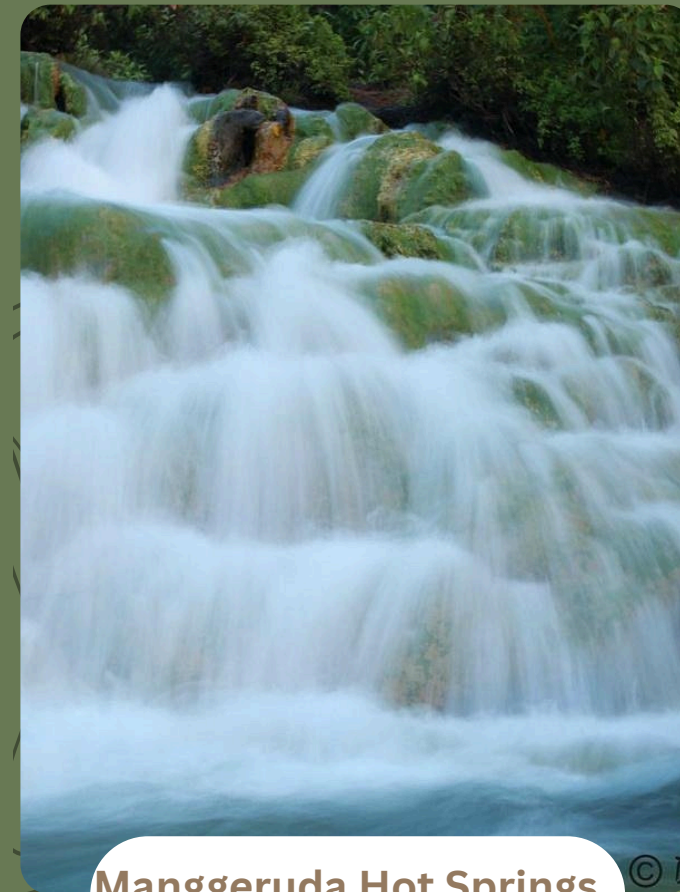


Day 6

ITINERARY DETAILS

- ✦ Start earlier in the morning to hop to Riung Islands; the 17 islands of the national park are an incredible day out in the sea, visiting different small desert islands by wooden private boat and including a delicious fish BBQ at the beach.
- ✦ Then continue Mangaruda Hot Spring is located in the Soa sub-district. Soa hot springs offer you the warmest at about 30-40°C. The spring water is believed to have a curative effect for those suffering from skin conditions. However, the experience of taking a warm, soothing bath in a beautiful, natural atmosphere is definitely a true delight for your body and soul.
- ✦ Continue to Bajawa Regency | Manulalu Jungle Resort

17 Islands Marine Park



Manggeruda Hot Springs



Bajawa Town



Day 7

DAY 7: BENA TRADITIONAL VILLAGE – AIMERE LOCAL ALCOHOL DESTILATION PROCESS – RUTENG TOWN

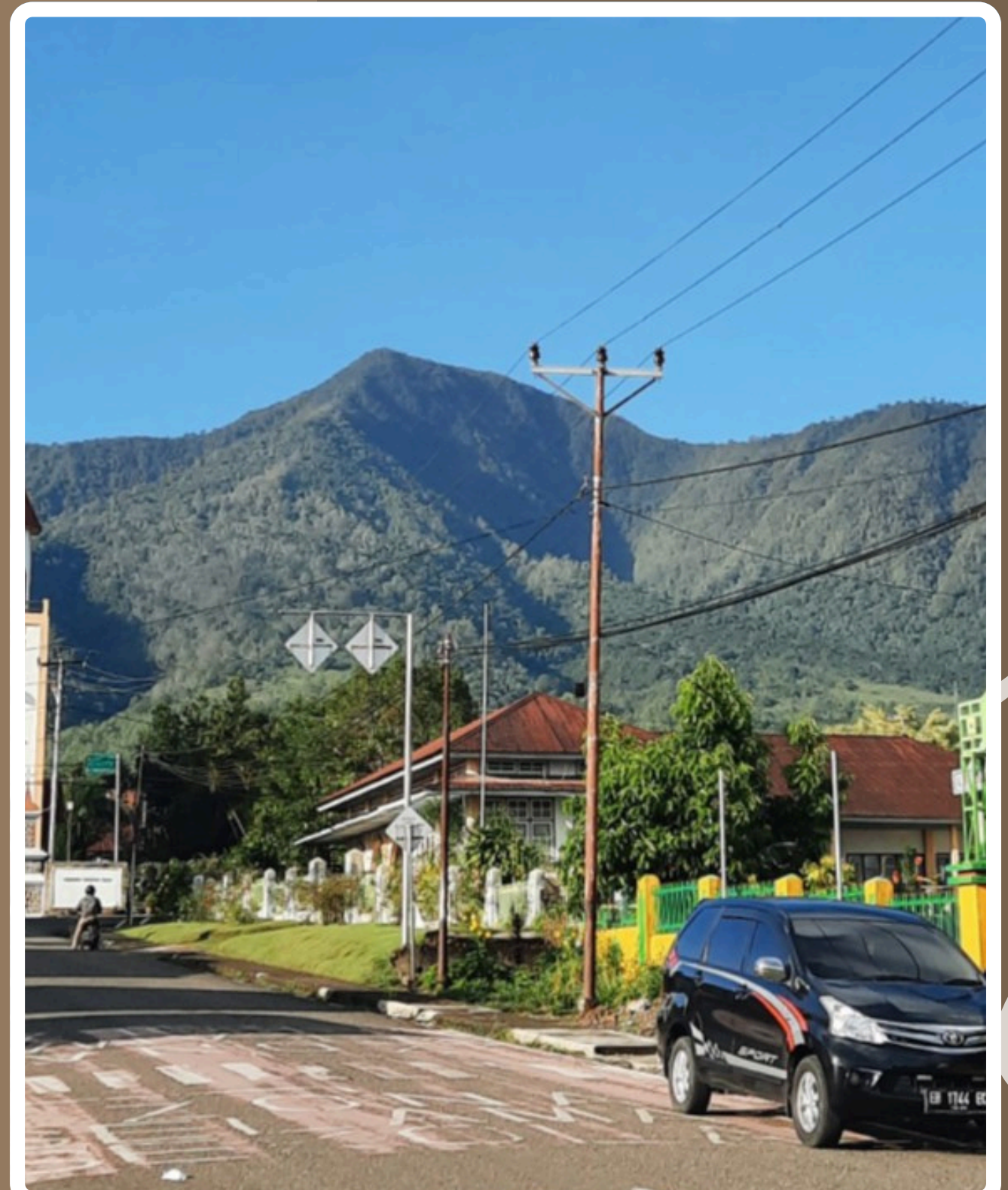
Activities on DAY 7

- Manulalu Jungle Resort – Bena Village (45 minutes)
- Bena Village – Aimere (1.45 hours)
- Aimere district – Ruteng (1.45 hours)

Transportation included : Private Car

Accommodation : Spring Hill Bungalow, Ruteng/similar

Meals included : Breakfast | Lunch | Dinner





Day 7

ITINERARY DETAILS

- 📌 Check out at 9.00 am.
- 📌 You will explore and talk with the people of Bena Village. It is one of the megalithic villages in Ngada Regency. You still can see hundreds of Stone Age sites preserved and culturally maintained by the locals. Also, here there are 9 clans living in 45 houses.
- 📌 These are the Dizi, the Dizi Azi, the Wahtu, the Deru Lalulewa, the Deru Solamae, the Ngada, the Khopa, and the Ago. Each clan lives on a different level of the terraced village, with the Bena clan in its center.
- 📌 After that you drive to the Aimere district, where you will see and learn how the traditional arrack is processed. It is called Sopi/Moke, and it is a beverage used in various traditional and religious ceremonies in Flores. The raw materials and processing techniques of this fermented product are very diverse, for information about processing this product is very limited in places.
- 📌 Then you drive to Ruteng town, where you will stay at a local hotel.

Bena Village



Aimere Local Alcohol



Ruteng



Day 8

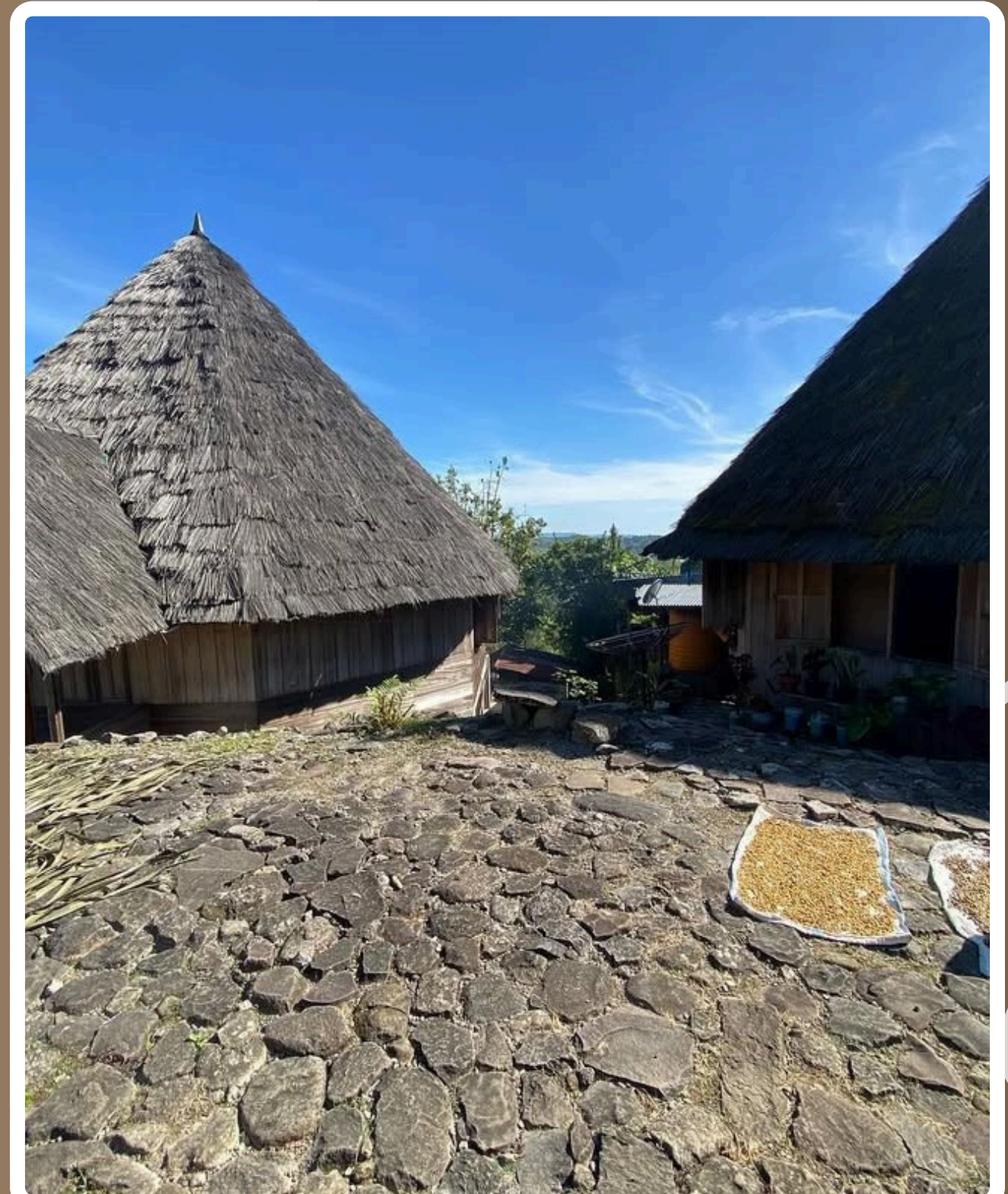
DAY 8: VISIT RUTENG PU'U – SPIDER WEB RICE FIELD LINGKO CANCAR – LABUAN BAJO TOWN

Activities on DAY 8

- Ruteng Town | Hotel – Spider Web Rice Field Lingko Cancar (1 hour)
- Spider Web Rice Field Lingko Cancar – Labuan Bajo (3,30 hours)

Transportation included : Private Car

Meals included : Breakfast | Lunch





Day 8

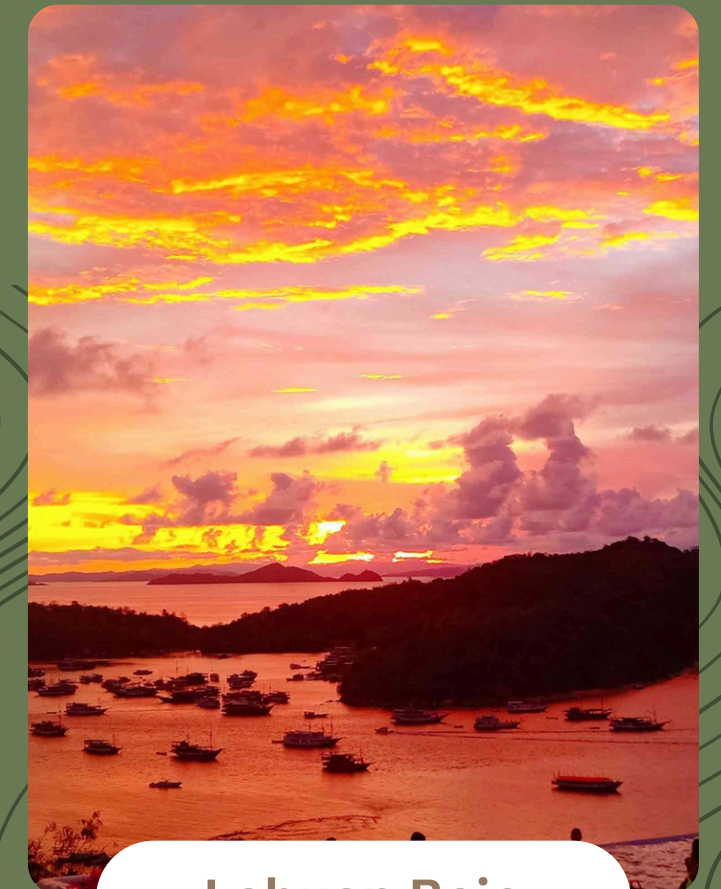
ITINERARY DETAILS

- ✦ Check out at 8.30 am. Then visit Ruteng Pu'u Village nearby Ruteng town.
- ✦ Then drive to Cancar-district, the distinctive spider web shaped rice fields called "Lingko" are a legacy of traditional Manggarai culture going back thousands of years. To see this, you have to hike a small hill or you can fly the drone to take a wide-angle picture.
- ✦ Then continue to Labuan Bajo town or take you to your hotel or KP3 harbor for starting your sailing trip to Komodo National Park or to Komodo Airport of Labuan Bajo for your next flight.

Ruteng Pu'u



Spider Web



Labuan Bajo

Additional



WHAT'S INCLUDED?

- PICK UP FROM AIRPORT & TRANSFER TO AIRPORT
- PROFESIONAL TOUR GUIDE
- BREAKFAST, LUNCH & DINNER AS ITINERARY
- ENTRANCE FEE TO ALL OF DESTINATIONS
- PRIVATE CAR (WITH FUEL) DURING TRIP IN FLORES ISLAND WITH EXPERIENCE DRIVER
- HOTEL ROOM EACH TOWN (ONE ROOM FOR 2 PAX)
- SMALL IKAT WEAVING (FOR WELCOMING)
- MINERAL WATER
- PRIVATE LOCAL WOODEN BOAT FOR EXPLORE ISLAND IN NORTH MAUMERE TOWN & RIUNG - 17 ISLANDS MARINE PARK
- SNORKELING GEAR
- TAX & SERVICES

WHAT'S EXCLUDED?

- AIR PLANE TICKET & AIRPORT TAX
- DONATION/TIP
- INSURANCE
- DIVING PACKAGE
- ALCOHOL
- LAUNDRY, TELEPHONE
- OTHERS SPECIAL REQUEST

Price per Pax



Price in Indonesian Rupiah (IDR)

- IDR 37,493,060.00 - 1 PAX
- IDR 20,440,530.00 - 2 PAX
- IDR 16,252,646.67 - 3 PAX
- IDR 16,255,855.00 - 4 PAX
- IDR 14,580,060.00 - 5 PAX
- IDR 13,959,696.67 - 6 PAX
- IDR 13,154,837.14 - 7 PAX
- IDR 12,660,092.50 - 8 PAX
- IDR 12,128,624.44 - 9 PAX
- IDR 12,845,250.00 - 10 PAX
- IDR 12,964,580.00 - 11 PAX
- IDR 12,650,605.00 - 12 PAX
- IDR 12,283,395.38 - 13 PAX
- IDR 12,567,830.00 - 14 PAX
- IDR 12,285,020.00 - 15 PAX

Price in Indonesian Rupiah (IDR)

- IDR 12,195,823.75 - 16 PAX
- IDR 11,941,768.24 - 17 PAX
- IDR 11,789,274.44 - 18 PAX
- IDR 12,138,453.68 - 19 PAX
- IDR 11,991,375.00 - 20 PAX
- IDR 12,094,541.90 - 21 PAX
- IDR 11,962,830.00 - 22 PAX
- IDR 12,112,023.48 - 23 PAX
- IDR 11,990,559.17 - 24 PAX
- IDR 11,826,012.00 - 25 PAX
- IDR 11,788,776.15 - 26 PAX
- IDR 11,664,668.89 - 27 PAX
- IDR 11,937,176.43 - 28 PAX
- IDR 12,040,911.03 - 29 PAX
- IDR 11,946,110.00 - 30 PAX