

TOUR ITINERARY 4D/3N (3 NIGHTS IN THE TOWN & 1 DAY TRIP TO KOMODO NP)

CODE: STDT4DFB
VALID: UNTIL MARCH 31st, 2026





About This Tour



Labuan Bajo is a fishing town located at the western end of the large island of Flores in the East Nusa Tenggara province of Indonesia.

It is the capital of the West Manggarai Regency, one of the regencies on Flores Island.

The town is one of the gateways into the charm of Flores; you can reach it by direct flight from Malaysia, Jakarta, Surabaya, or Bali, or you can do it by ferry boat.

Why should you come to Labuan Bajo? Because there are some good destinations to visit, such as Mirror Cave Stone, Puncak Waringin Hill, Amelia Sea View, Ranko Cave, several waterfalls, and Komodo National Park.

Komodo National Park is located in the center of the Indonesian archipelago, between the islands of Sumbawa and Flores. It's composed of some major islands (Komodo Island, Rinca Island, Padar Island, Gili Motang, and Nusakode), and there are some smaller islands.



About This Tour

Exploring the Komodo national park you will have a good underwater experience with a thousand kinds of fishes such as Manta rays, turtle, shark and the others, still have a chance to relax at some beauty pink beach with crystal sea water. Take a moment to appreciate the panoramic views of turquoise sea, dry or green rolling hill, blue sky and the colors of the beach. Komodo island is inhabited by a population of the flora and fauna especially komodo dragon.

Nusa Tenggara Timur
eastern lesser sunda islands



KUPANG



ITINERARY DETAILS





ITINERARY

**DAY 1: PICK UP FROM KOMODO AIRPORT OF LABUAN BAJO –
WARINGIN HILL – MIRROR CAVE – AMELIA SEA VIEW**

Activities

- Arrival recommended flight (06.30-12.00 AM)
- Komodo Airport – Mirror Cave Stone (30 minutes)
- Mirror Cave Stone –Waringin Hill (30 minutes)
- Waringin Hill – Amelia Sea View (25 minutes)

Transportation included : Private Car

Accommodation : Katamaran Beach Resort/ Loccal Collection Hotel/
Meruorah Komodo/ Sudamala Resort Komodo/ Sudamala Resort Seraya/ Ayana
Komodo Resort/ Plataran Komodo Resort

Meals included : Lunch | Dinner



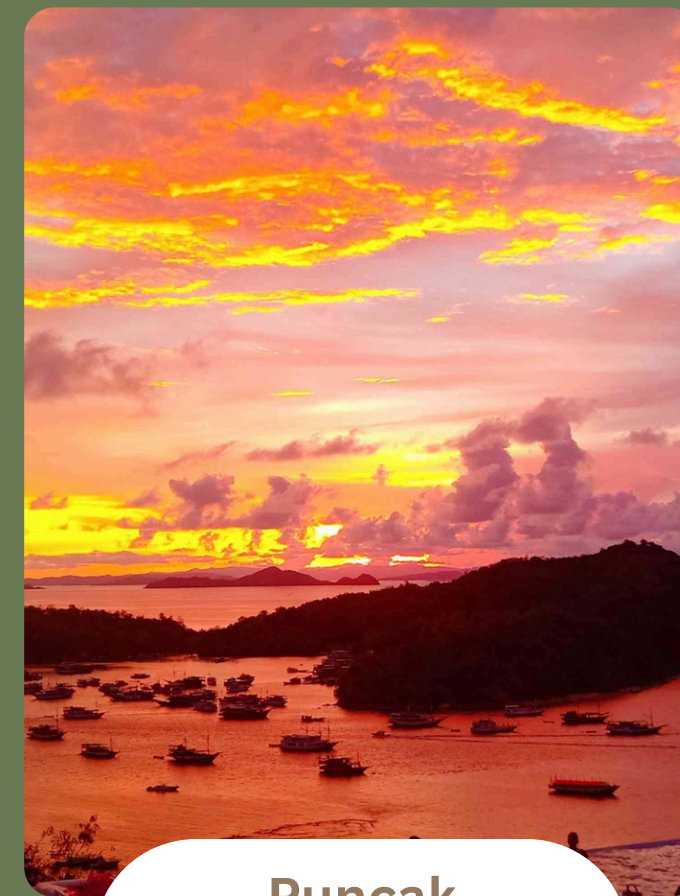
Day 1 - Itinerary Details

- ✦ A guide will pick you up at the hotel and welcome you with traditional weaving.
- ✦ You start at Gua Batu Cermin, or Mirror Cave Stone. It is actually a tunnel or cave in the dark stone hill of Labuan Bajo, west of Manggarai. The sunshine comes in through a hole in the tunnel and bounces on the stone walls that again reflect small lights to others inside the cave like a mirror. In that cave you will see some fossils of sea life, such as turtles, fish, and hard coral.

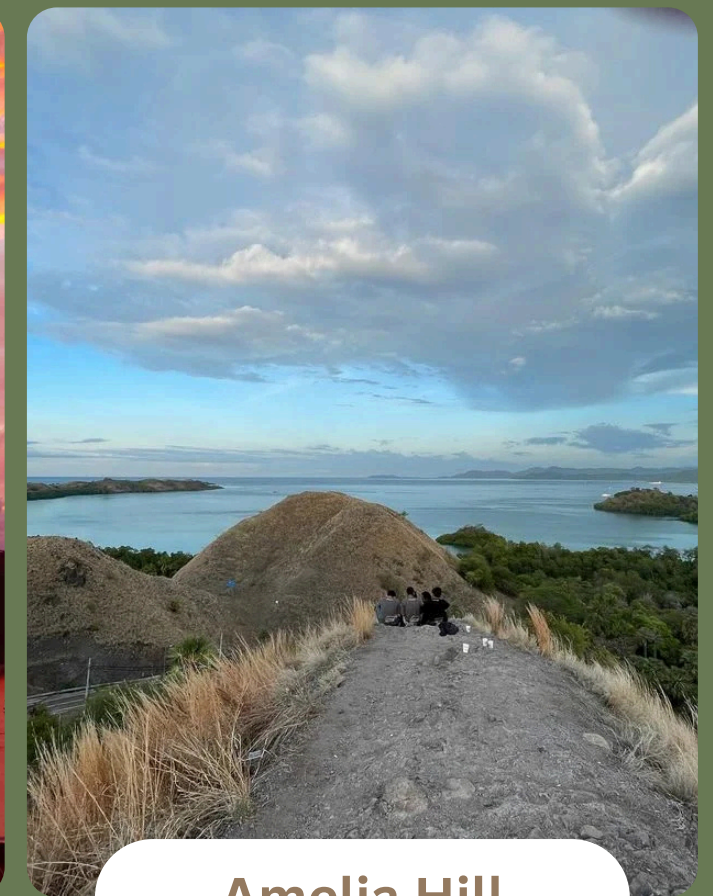
- ✦ Then you will go to Waringin Hill. It is about 50 meters above sea level and one of the best spots to enjoy the sunset in the town. From here, you can also see the beauty of Labuan Bajo town.

- ✦ Continuing to Amelia Sea View, its hills offer a breathtaking combination of sea and mountains. From the top of the hill, you can enjoy both sunrise and sunset, as it provides a 360° panorama of Labuan Bajo and surrounding waters.

Batu Cermin



**Puncak
Waringin**



Amelia Hill



ITINERARY

DAY 2: LABUAN BAJO – PADAR ISLAND (SUNRISE TREKKING) – PINK BEACH (SNORKELING)) – KOMODO ISLAND (TREKKING TO SEE KOMODO DRAGON) – MAKASSAR REEF (SNORKELING) – MANTA POINT (SEE MANTA)

Activities

- Picking you up at the hotel (5.45 – 6.15 am)
- Labuan Bajo – Padar Island (1.30 minutes)
- Padar Island – Pink Beach (40 minutes)
- Pink Beach – Komodo Island (40 minutes)
- Komodo Island – Makassar Reef (40 minutes)
- Makassar Reef – Manta Point (10 minutes)
- Departure at 5.00 pm

Transportation included : Private Car | Private Speedboat

Accommodation : Katamaran Beach Resort/ Loccal Collection Hotel/ Meruorah Komodo/ Sudamala Resort Komodo/ Sudamala Resort Seraya/ Ayana Komodo Resort/ Plataran Komodo Resort

Meals included : Breakfast | Lunch Box | Dinner



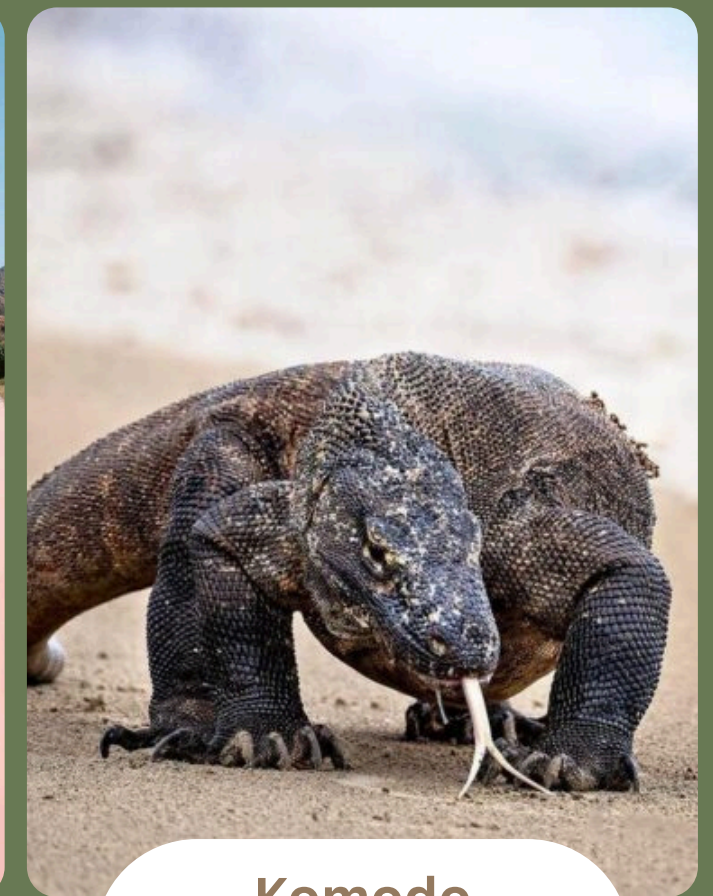
Day 2 - Itinerary Details

- ✦ A guide/driver will pick you up at the hotel between 5.45 and 6.15 am.
- ✦ You start to sail to Padar Island to enjoy the panorama from the top, which means you're going to do trekking to enjoy the stunning three different bay views. The view of the blue sea and the surrounding small islands are just mesmerizing. Then you sail to one of the pink beaches (Long Pink Beach Padar or Pink Beach Komodo). This exceptional beach gets its striking color from microscopic animals called foraminifera, which produce a red pigment on the coral reef. You will relax and have fun swimming around this beach.
- ✦ Komodo Island is the home of the unique and rare biggest lizard on earth, called the Komodo dragon. The ways to explore the flora and fauna there are three different treks: short trek, medium trek, and long trek (regular trek), and you could also do an adventure trek (optional). On the island, you will explore and trek to find them out.

Padar Island



Pink Beach

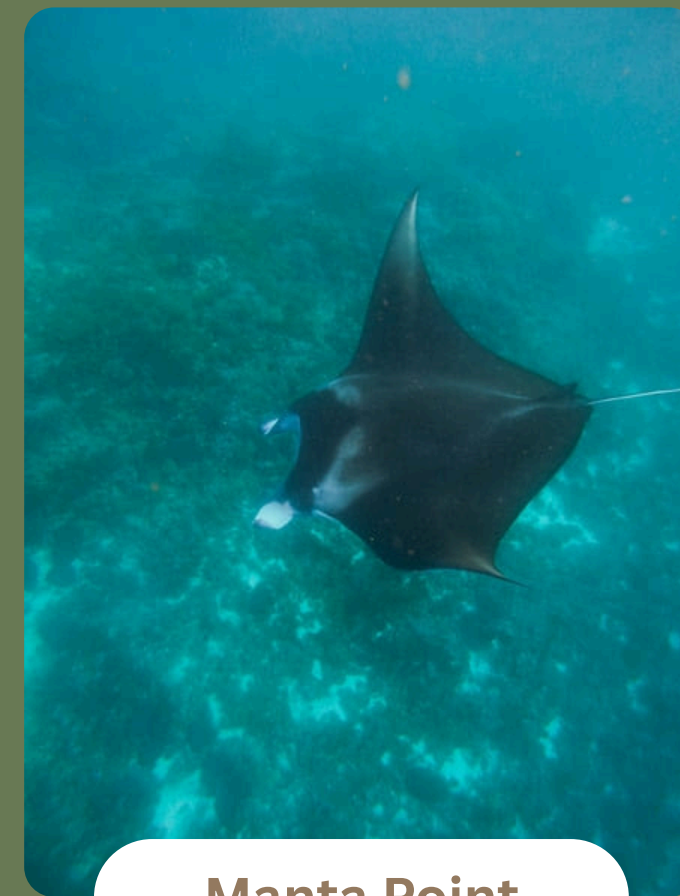
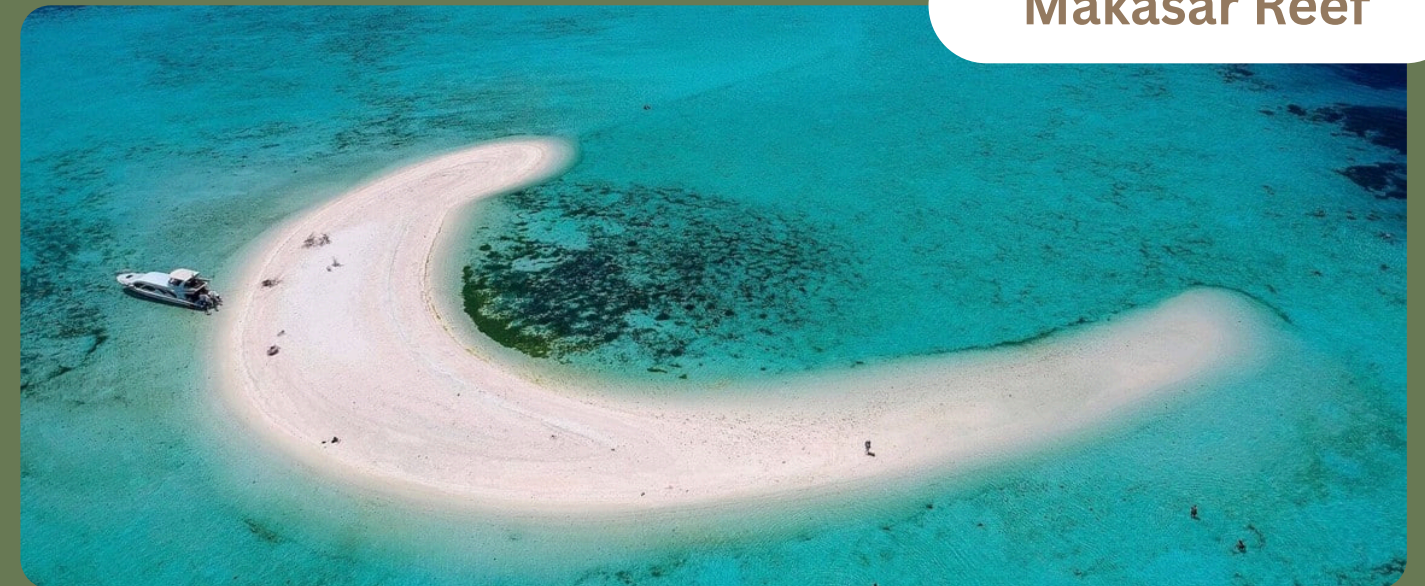


**Komodo
Island**

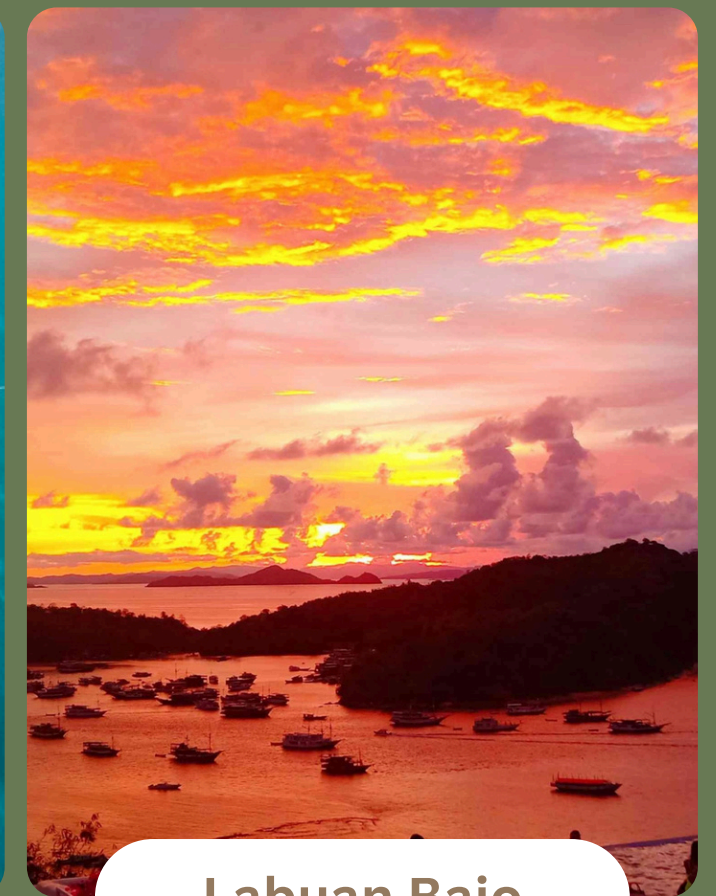
Day 2 - Itinerary Details

- ✦ Then you continue to Makasar Reef. It's a tiny sand island in the middle of the ocean, which will submerge underwater when the sea level rises over it. It's a good place for relaxing and snorkeling in shallow water. This sand island is located very close to Manta Point. If you are lucky, you will be snorkeling with manta rays (they are 3–4 meters long). After that, you sail back to Labuan Bajo.

Makasar Reef



Manta Point



Labuan Bajo



ITINERARY

DAY 3 : MELO VILLAGE – RUMAH TENUN BAKU PEDULI – RANGKO CAVE

Activities

- Hotel – Melo Village (1.30 hour)
- Melo Village – Rumah Tenun Baku Peduli (45 minutes)
- Rumah Tenun Baku Peduli – Rangko Cave (2.30 minutes)

Transportation included : Private Car
Accommodation : Katamaran Beach Resort/ Loccal Collection Hotel/
Meruorah Komodo/ Sudamala Resort Komodo/ Sudamala Resort Seraya/ Ayana
Komodo Resort/ Plataran Komodo Resort
Meals included : Breakfast | Lunch | Dinner



Day 3 - Itinerary Details

- ✦ Breakfast at 6.00 to 8.00 am.
- ✦ You start at Melo village; it is one of the original areas that holds its charm. A typical village dance will be presented, namely the caci dance. This dance is a typical Manggarai dance, and the people who play it are native men from this village. The dance also has a philosophical value, namely as a form of gratitude to God as the Creator of the universe.
- ✦ Continue to Rumah Tenun Baku Peduli. This place showcased various tenun from around Flores. When you are arriving, they immediately demonstrated how the tenun was woven and patiently explained the process.
- ✦ Then you will drive to Rangko cave. It is a large pool of crystal-clear seawater, glowing a bright turquoise color as a result of sunlight coming through the mouth of the cave. After that, back to the hotel.

Melo Village



Rumah Tenun



Rangko Cave



ITINERARY

DAY 4: HOTEL – GALLERY SHOP – KOMODO AIRPORT

Activities

- We recommended to take flight around 12.00 AM – 18.00 PM.
- Hotel – Exotic Komodo | Kado Bajo (30 minutes)
- Komodo Airport

Transportation included : Private Car

Meals included : Breakfast | Lunch



Day 4 - Itinerary Details

- ✦ Breakfast starts from 6.00 to 10.00 am.
- ✦ A guide will meet you at the hotel lobby and do the check-out, and then you go to the gallery shop to look for something that you like from here, such as traditional weaving, a Komodo statue, local coffee, traditional arrack, etc.
- ✦ Transfer to Komodo Airport



Gallery Shop

Additional



WHAT'S INCLUDED?

- PICK UP FROM AIRPORT & TRANSFER TO AIRPORT
- PROFESSIONAL TOUR GUIDE
- ENTRANCE FEE, RANGER FEE
- PRIVATE CAR AC WITH EXPERIENCE DRIVER IN LABUAN BAJO
- PRIVATE SPEEDBOAT FOR DAILY TRIP TO KNP
- PRIVATE LOCAL WOODEN BOAT FOR VISIT RANGKO CAVE
- BREAKFAST, LUNCH & DINNER AS ITINERARY
- SNORKELING GEAR
- HOTEL ROOM (1 ROOM FOR 2 PAX)
- SMALL IKAT WEAVING (FOR WELCOMING)
- INSURANCE
- MINERAL WATER
- TAX & SERVICES

WHAT'S EXCLUDED?

- FLIGHT TICKET & AIRPORT TAX
- DONATION/TIP
- ALCOHOL
- DIVING PACKAGE
- LAUNDRY, TELEPHONE
- OTHERS SPECIAL REQUEST

Noted: The price listed next are curated based on the hotels below

NAME HOTEL/RESORT	ROOM TYPE
KATAMARAN BEACH RESORT	Tropical Ocean View
LOCCAL COLLECTION	Wehang Suite
MERUORAH KOMODO	The Phinizy
SUDAMALA RESORT KOMODO	One Bed Room Pool Villa
SUDAMALA RESORT SERAYA	Private Beach Bungalow
AYANA KOMODO RESORT	Ocean View Room
PLATARAN KOMODO RESORT	Deluxe Garden Residence

Price per Pax



Price in Indonesian Rupiah (IDR)

RATE PER PAX:

- 1 PAX = IDR 38,241,500.00
- 2 PAX = IDR 19,849,500.00
- 3 PAX = IDR 16,424,833.33
- 4 PAX = IDR 15,655,750.00
- 5 PAX = IDR 14,375,900.00
- 6 PAX = IDR 13,917,200.00
- 7 PAX = IDR 13,693,271.43
- 8 PAX = IDR 13,192,575.00
- 9 PAX = IDR 12,803,144.44
- 10 PAX = IDR 12,716,000.00

RATE PER PAX:

- 11 PAX = IDR 13,065,700.00
- 12 PAX = IDR 12,877,700.00
- 13 PAX = IDR 12,804,930.77
- 14 PAX = IDR 12,582,271.43
- 15 PAX = IDR 12,389,300.00
- 16 PAX = IDR 12,334,575.00
- 17 PAX = IDR 12,310,876.47
- 18 PAX = IDR 12,165,144.44
- 19 PAX = IDR 12,034,752.63
- 20 PAX = IDR 11,917,400.00

RATE PER PAX:

- 21 PAX = IDR 12,325,604.76
- 22 PAX = IDR 12,205,700.00
- 23 PAX = IDR 12,096,221.74
- 24 PAX = IDR 11,995,866.67
- 25 PAX = IDR 11,903,540.00
- 26 PAX = IDR 12,022,323.08
- 27 PAX = IDR 11,935,855.56
- 28 PAX = IDR 11,855,564.29
- 29 PAX = IDR 11,780,810.34
- 30 PAX = IDR 11,755,406.67

RATE PER PAX:

- 31 PAX = IDR 12,435,216.13
- 32 PAX = IDR 12,343,168.75
- 33 PAX = IDR 12,262,700.00
- 34 PAX = IDR 12,192,788.24
- 35 PAX = IDR 12,144,157.14
- 36 PAX = IDR 12,203,644.44
- 37 PAX = IDR 12,165,970.27
- 38 PAX = IDR 12,130,278.95
- 39 PAX = IDR 12,096,417.95
- 40 PAX = IDR 12,064,250.00

RATE PER PAX:

- 41 PAX = IDR 12,232,751.22
- 42 PAX = IDR 12,167,440.48
- 43 PAX = IDR 12,109,772.09
- 44 PAX = IDR 12,059,225.00
- 45 PAX = IDR 11,999,435.56
- 46 PAX = IDR 12,036,819.35
- 47 PAX = IDR 11,998,654.89
- 48 PAX = IDR 11,962,080.63
- 49 PAX = IDR 11,926,999.18
- 50 PAX = IDR 11,893,321.00

RATE PER PAX:

- 51 PAX = IDR 12,199,582.35
- 52 PAX = IDR 12,147,469.23
- 53 PAX = IDR 12,101,058.49
- 54 PAX = IDR 12,060,033.33
- 55 PAX = IDR 12,011,100.00
- 56 PAX = IDR 12,031,682.14
- 57 PAX = IDR 11,990,559.65
- 58 PAX = IDR 11,950,855.17
- 59 PAX = IDR 11,912,496.61
- 60 PAX = IDR 11,875,416.67

RATE PER PAX:

- 61 PAX = IDR 12,196,601.64
- 62 PAX = IDR 12,152,941.94
- 63 PAX = IDR 12,113,811.11
- 64 PAX = IDR 12,078,996.88
- 65 PAX = IDR 12,037,300.00
- 66 PAX = IDR 12,054,366.67
- 67 PAX = IDR 12,019,043.28
- 68 PAX = IDR 11,984,758.82
- 69 PAX = IDR 11,951,468.12
- 70 PAX = IDR 11,919,128.57